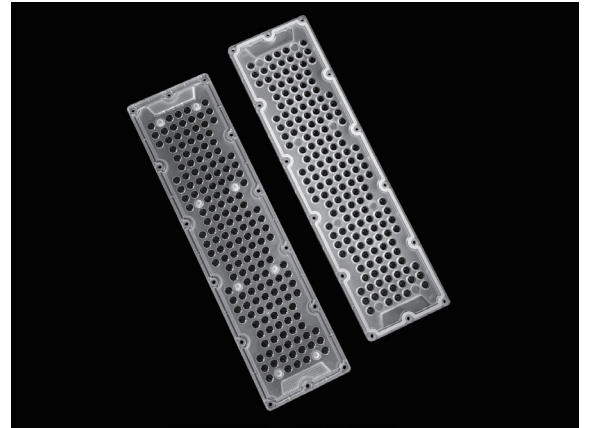


Multi-Angle 168LEDs for warehouse aisles and shelf lighting

Model:	AJHB330D168LED
Size:	280x29(mm)
Height:	9.48mm
Beam Angle:	60°,85°,30x90°,30x90°(straight), 30x110°
Material:	PC
Transmittance:	>88%
LED Type:	2835/ 3030LED



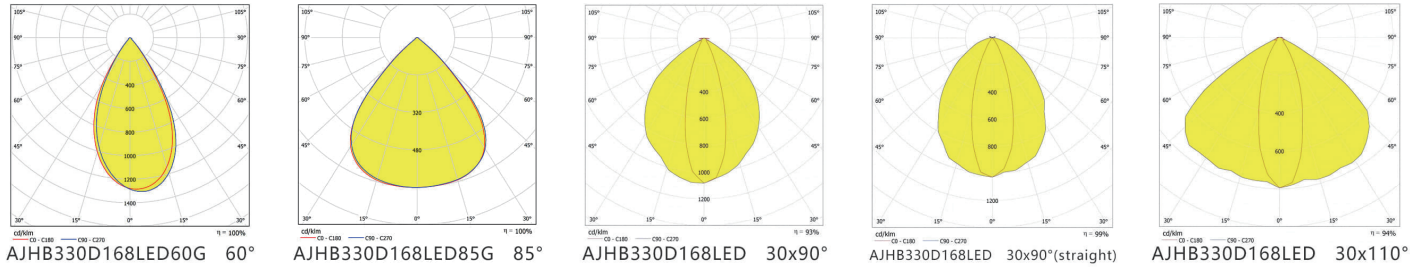
FEATURES

1. Integrates 168 LEDs, with selectable beam angles including 60°, 85°, 30°×90°, 30°×90° (straight strip), and 30°×110°.
2. PC material, light transmittance >88%, compatible with 2835/3030 LEDs. Flexibly adapts to different shelf heights and aisle widths for precise light distribution.
3. Free choice of multiple beam angles to meet linear lighting needs in offices, warehouse aisles, shelving, and similar applications.

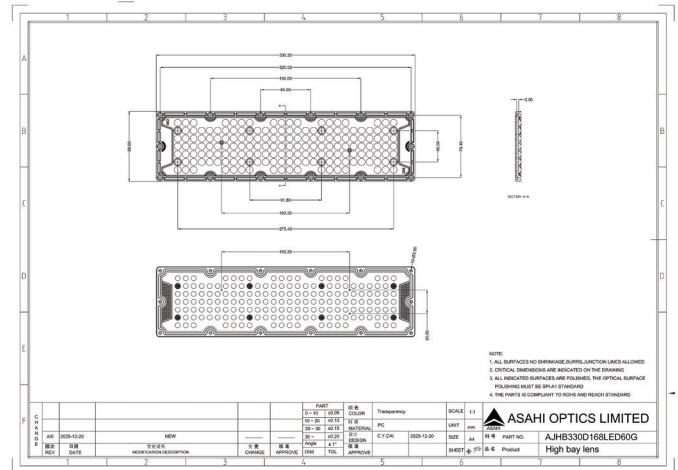
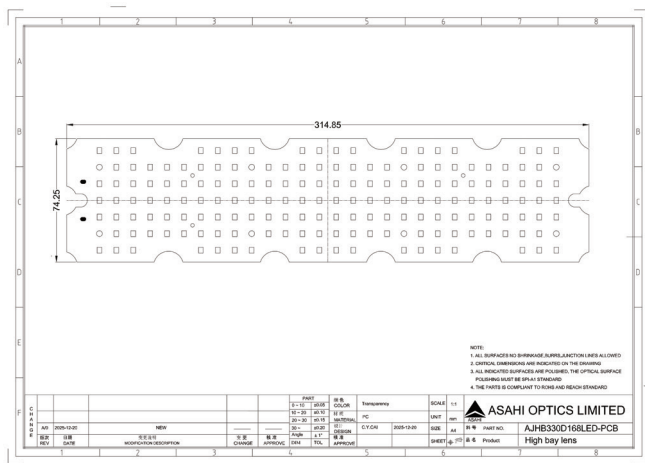
Line lights, Office lighting, Warehouse aisles, Shelf lighting



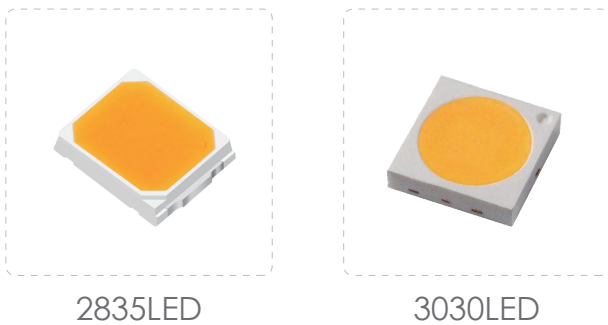
LENS LIGHT DISTRIBUTION & APPLICATION



LENS DRAWING



LED TYPE



LED BRAND

