

35mm COB LED Optical Lens For PAR Lighting

Model:	AHCOB35D10H
Dimensions:	35mm
Height:	10mm
Beam Angle:	24°, 38°, 60°
Material:	PMMA
Transmittance:	> 93%
LED Type:	COB LED

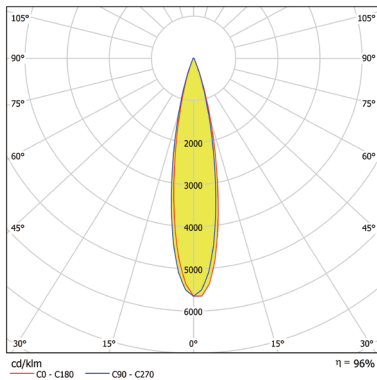


FEATURES

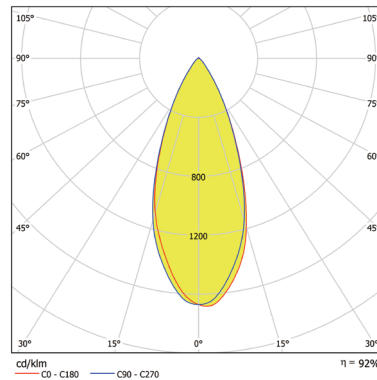
1. Possessing aesthetic value: With a height of only 10mm, the 35mm ultra-thin COB lens perfectly aligns with modern minimalist and masterless lighting design styles. It seamlessly integrates with ceiling installations, achieving a premium "light without visible fixtures" effect.
2. Outstanding Anti-Glare: The anti-glare design of this lens reduces and shields light source brightness, softening and diffusing the light to illuminate only the necessary areas while preventing light from "flaring" or causing "glare."
3. This COB lens offers beam angles of 24°, 36°, and 60°, covering the three core application scenarios of narrow, medium, and wide coverage (such as accent lighting, general lighting, and wall-washing lighting), meeting over 80% of application needs.



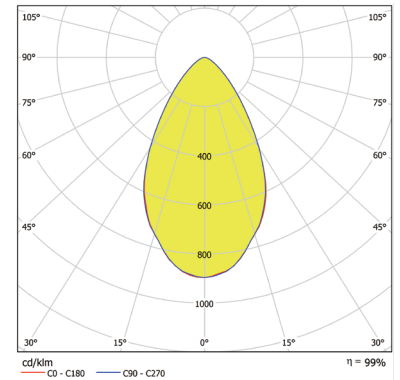
LENS LIGHT DISTRIBUTION & APPLICATION



24°

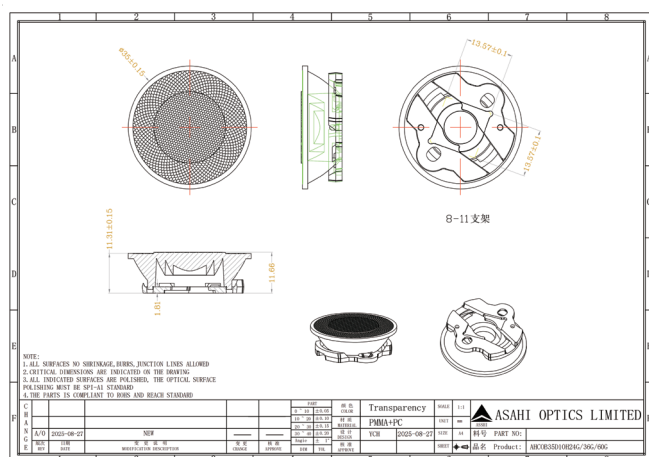


38°



60°

LENS DRAWING



PAR lighting, Spot Light, Down Light



LED TYPE



COB

LED BRAND

