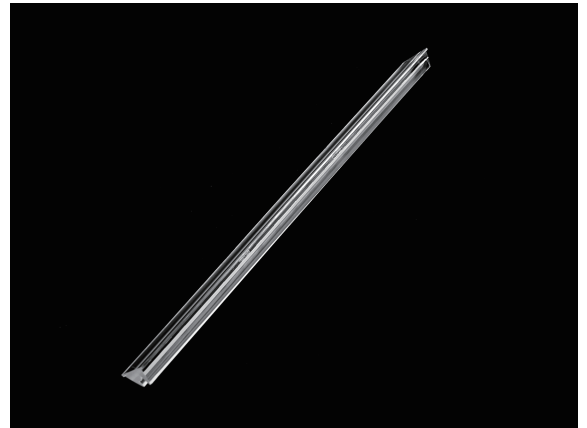


300X21.9mm linear lenses with 17X83degree for classroom lighting

Model:	AZBL300D3030T1783G
Size:	300x26.31(mm)
Height:	11.80mm
Beam Angle:	17°x83°
Material:	PC
Transmittance:	>87%
LED Type:	2835LED



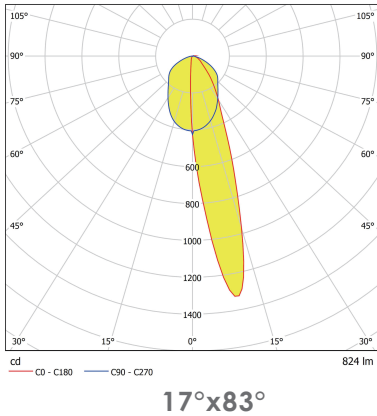
FEATURES

There are 3 luminaires for illuminating the blackboard. Each luminaire consists of 4 pcs of lenses.

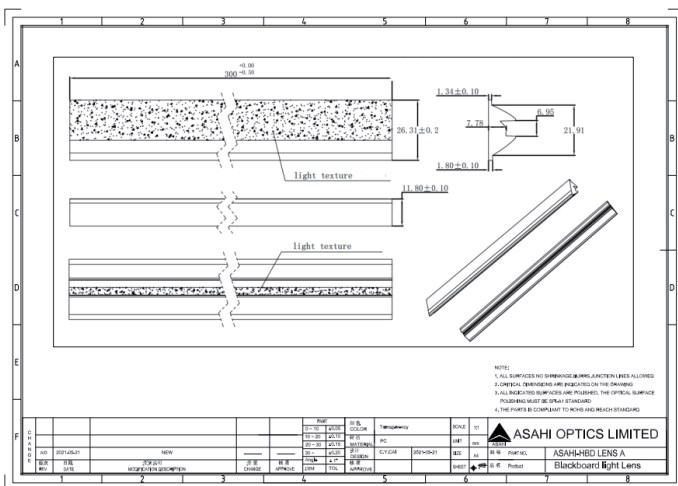
- Horizontal distance far away from blackboard: 0.35m
- Vertical distance far away from blackboard is: 0.14m
- Luminaire length:1.2m
- Luminaire interval:1.6m
- Flux:3800 lm



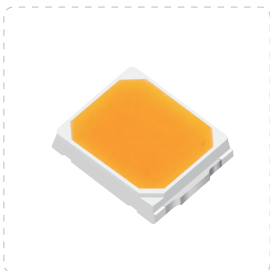
LENS LIGHT DISTRIBUTION & APPLICATION



LENS DRAWING



LED TYPE



2835LED



2835LED

LED BRAND

