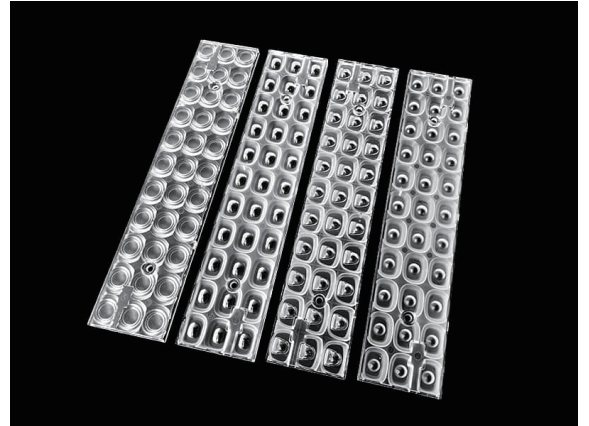


## 286mm 3x11 Linear lens series

Model:	ASL286D61H33LED
Size:	286x61(mm)
Height:	7.2mm
Beam Angle:	30°,60°,90°,120°,A20°,DA25°,DA30°
Material:	PMMA
Transmittance:	>93%
LED Type:	2835/3030/5050LED

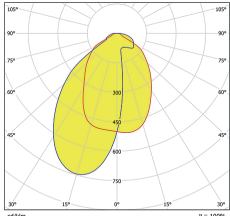


### FEATURES

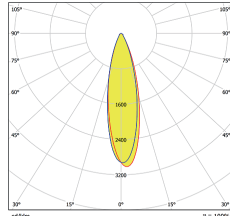
1. The 3-row linear lens is engineered to provide uniform and efficient light distribution. With its unique design, it effectively spreads and directs light across a wide area, minimizing dark spots or uneven illumination. This characteristic makes it suitable for applications that require consistent and well-distributed lighting.
2. This 33LED linear lens offers precise beam control, allowing for accurate light direction and focusing. It enables designers to shape the light beam according to specific requirements, whether it's achieving a narrow spotlight or a wider floodlight effect. This versatility makes it ideal for applications that demand controlled and directed lighting.
3. The 33LED linear lens incorporates anti-glare features to minimize discomfort caused by excessive brightness or glare. It effectively diffuses light and reduces the direct line of sight to the light source, resulting in enhanced visual comfort. This characteristic is especially valuable in indoor lighting applications where glare can be a significant concern.



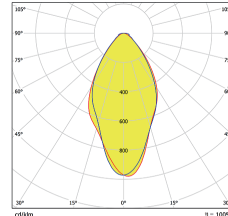
## LENS LIGHT DISTRIBUTION & APPLICATION



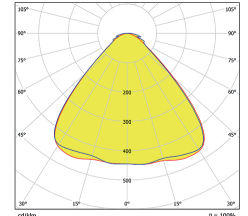
ASL286D61H33LED A20°



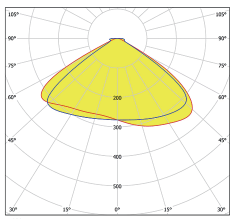
ASL286D61H33LED 30°



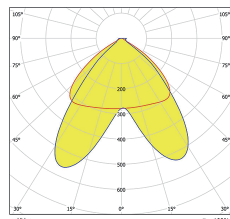
ASL286D61H33LED 60°



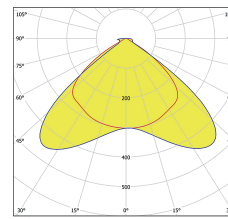
ASL286D61H33LED 90°



ASL286D61H33LED 120°

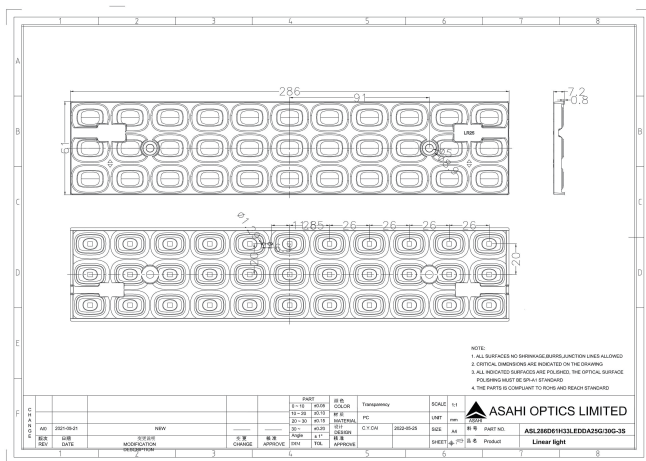


ASL286D61H33LED DA25°



ASL286D61H33LED DA30°

## LENS DRAWING



## LED TYPE



2835LED



2835LED

## LED BRAND

