

LED Linear Light Fixture Featuring Oval Beam Angle

Model:	ASL280D40HXXLEDDA25G
Size:	280x40(mm)
Height:	11.4mm
Beam Angle:	Double Asymmetric 25°
Material:	PC-1250Z TEIJIN
Transmittance:	> 90%
LED Type:	2835/ 3030LED

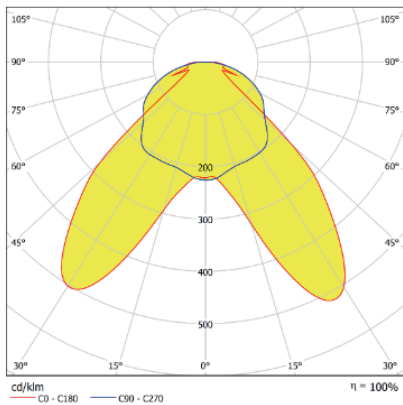


FEATURES

1. It's compatible with Zhaga standard PCB.
2. PMMA material with 93% lighting efficiency.
3. Excellent lighting performance for indoor lighting.
4. Lower UGR to protect human eyes.
5. Asahi often offer a range of customization options for indoor linear lighting lenses. These options include different levels of light diffusion, beam angles, and color temperature control. Customized lenses allow designers and architects to tailor the lighting to specific requirements, creating unique and personalized lighting solutions.



LENS LIGHT DISTRIBUTION & APPLICATION

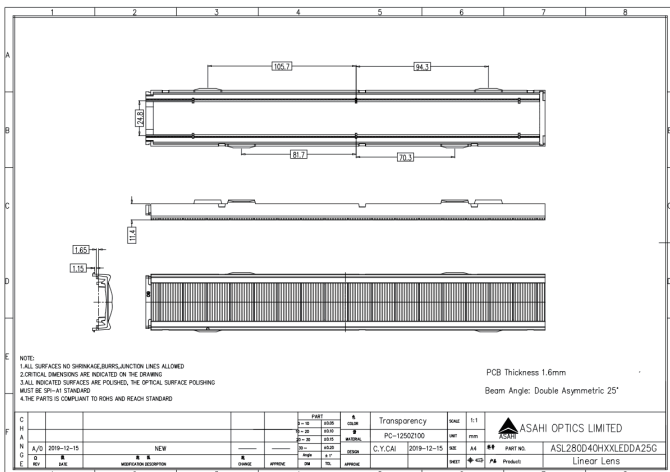


Double Asymmetric 25°

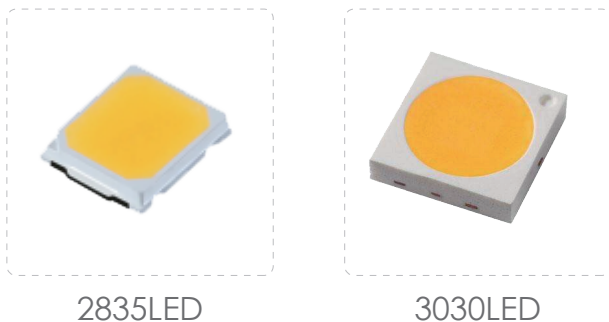
Linear Lighting/Warehouse Lamp/Supermarket Lighting



LENS DRAWING



LED TYPE



LED BRAND

