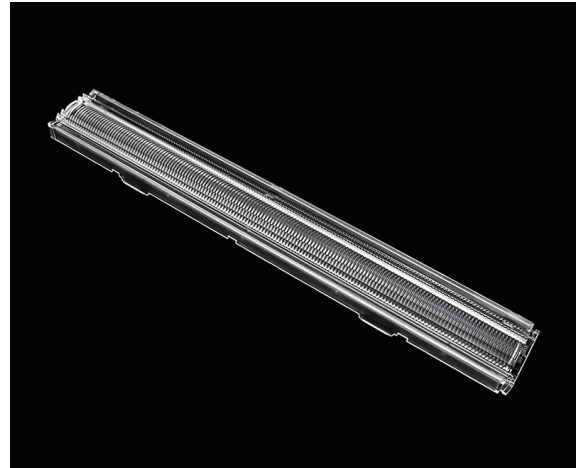


Linear Lighting Optical Design With Round Beam Angle

Model:	ASL280D40HXXLED90G
Size:	280x40(mm)
Height:	11.61mm
Beam Angle:	90°
Material:	PC-1250Z TEIJIN
Transmittance:	> 90%
LED Type:	2835/ 3030/ 5630LED

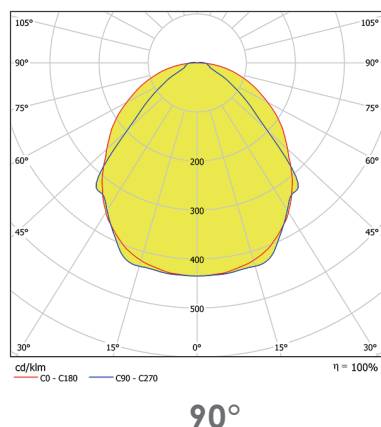


FEATURES

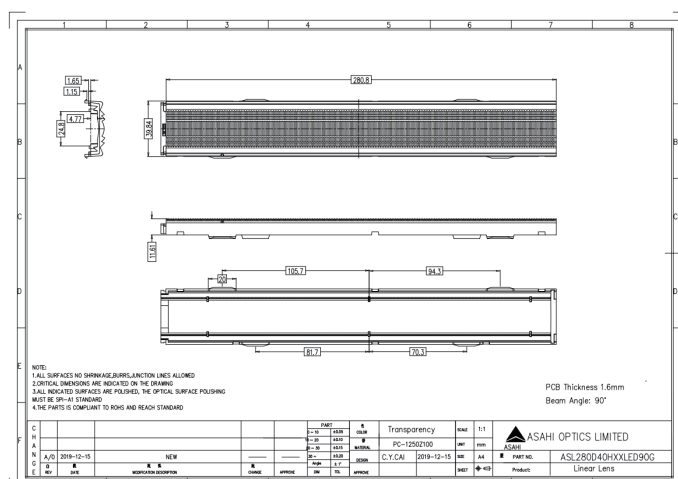
1. It's compatible with Zhaga standard PCB.
2. PMMA material with 93% lighting efficiency.
3. Excellent lighting performance for indoor lighting.
4. Lower UGR to protect human eyes.
5. Indoor linear lighting lenses find extensive application in architectural lighting, where they can be used to illuminate hallways, corridors, and other linear spaces. The lenses help create a uniform and visually appealing lighting effect, enhancing the architectural features of the space.



LENS LIGHT DISTRIBUTION & APPLICATION



LENS DRAWING



LED TYPE



2835LED



3030LED

LED BRAND

