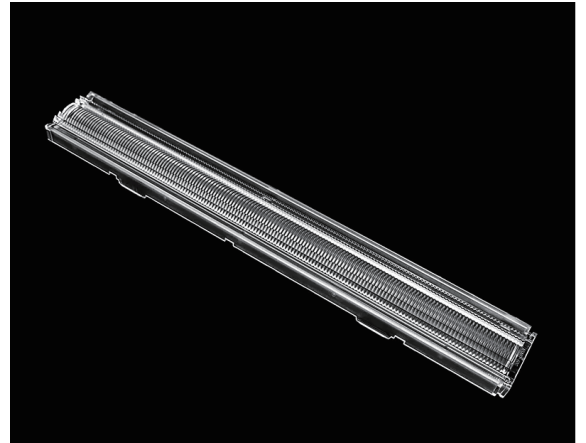


Zhaga Standard Linear Lens With High Efficiency

Model:	ASL280D40HXXLED60G
Size:	280x40(mm)
Height:	11.61mm
Beam Angle:	60°
Material:	PC-1250Z TEIJIN
Transmittance:	> 90%
LED Type:	2835/ 3030LED

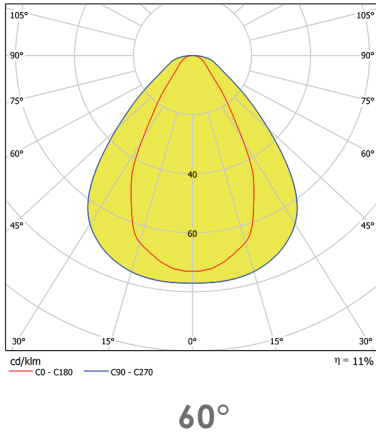


FEATURES

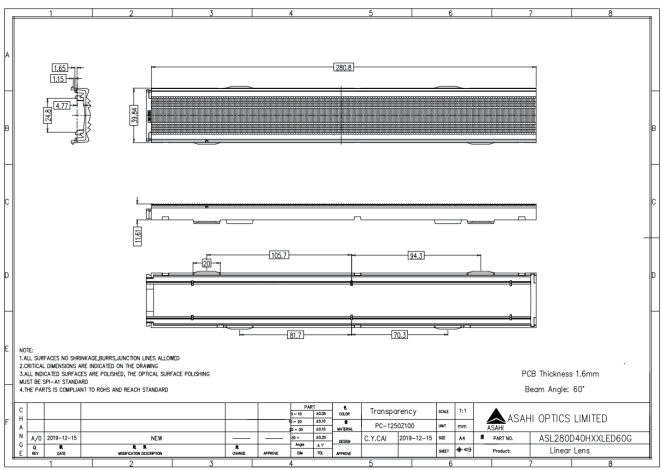
1. It's compatible with Zhaga standard PCB.
2. PMMA material with 93% lighting efficiency.
3. Excellent lighting performance for indoor lighting.
4. Lower UGR to protect human eyes.



LENS LIGHT DISTRIBUTION & APPLICATION



LENS DRAWING



LED TYPE



LED BRAND

