

Linear Optical Lens With Versatile Distributions

Model:	ASL280D15H24LED
Size:	280x28.62(mm)
Height:	15.87mm
Beam Angle:	15°, 30°, 60°, 90°, 15x60°
Material:	PMMA
Transmittance:	> 93%
LED Type:	2835/3030LED

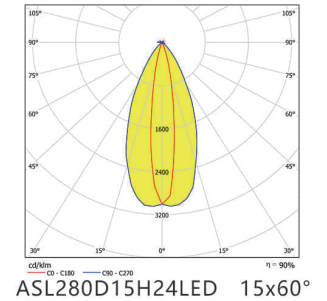
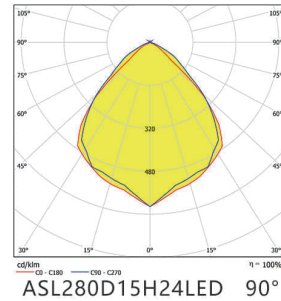
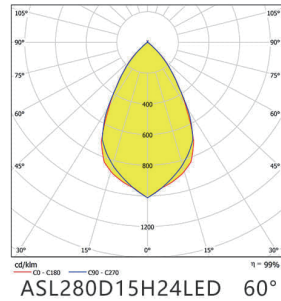
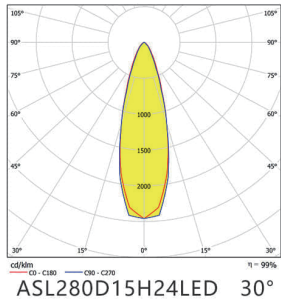


FEATURES

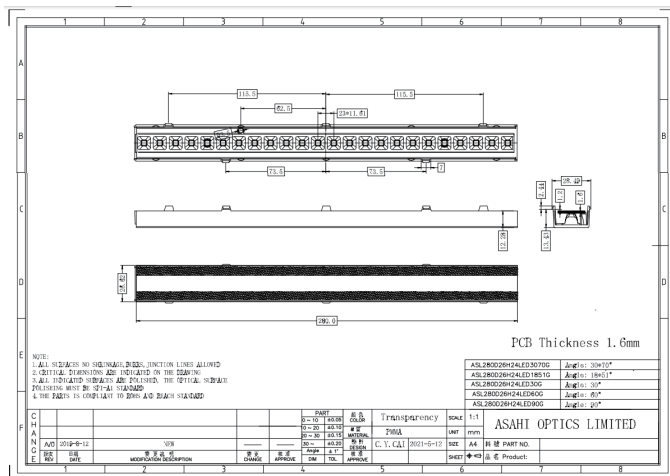
1. The lens allows for the selection of different beam angles. This means that the light emitted from the fixture can be adjusted to provide various illumination patterns, ranging from narrow spots to wider floods.
2. The lens helps control the direction and spread of light emitted by the fixture, ensuring that the light is efficiently distributed in the desired area or surface within the selected beam angle. It provides flexibility in achieving different lighting effects and coverage.
3. The lens offers versatility in lighting design, allowing for the adaptation of the fixture to different environments or applications. By changing the beam angle, it is possible to customize the lighting solution for specific requirements or preferences.
4. The 15mm width linear lens with multiple beam angles may come in different designs and configurations to suit specific lighting requirements. It can be tailored to fit different types of linear lighting fixtures with a 15mm width, allowing for flexibility in design and application.



LENS LIGHT DISTRIBUTION & APPLICATION



LENS DRAWING



LED TYPE



2835LED



3030LED

LED BRAND

