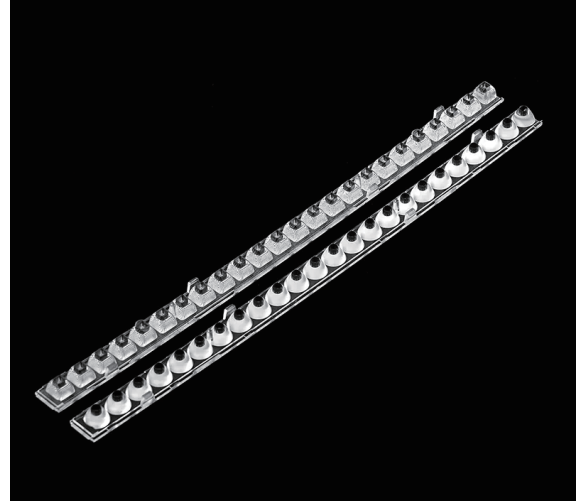


Recessed Linear 28LEDs Optics Featuring Narrow Fixture

Model:	ASL280D10H28LED
Size:	280x11(mm)
Height:	9.36mm
Beam Angle:	15x60°,30°
Material:	PMMA
Transmittance:	> 93%
LED Type:	2835/3030LED

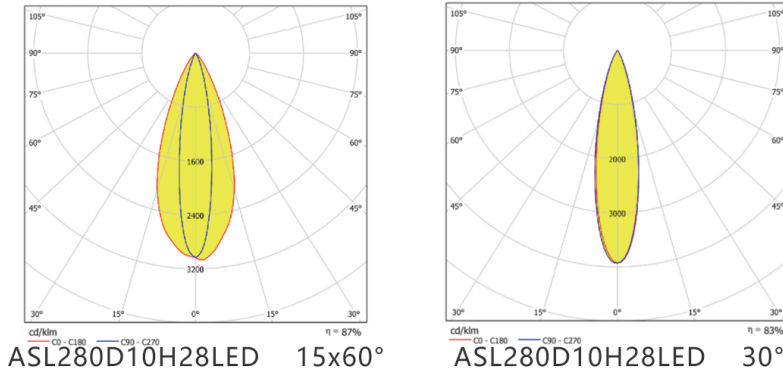


FEATURES

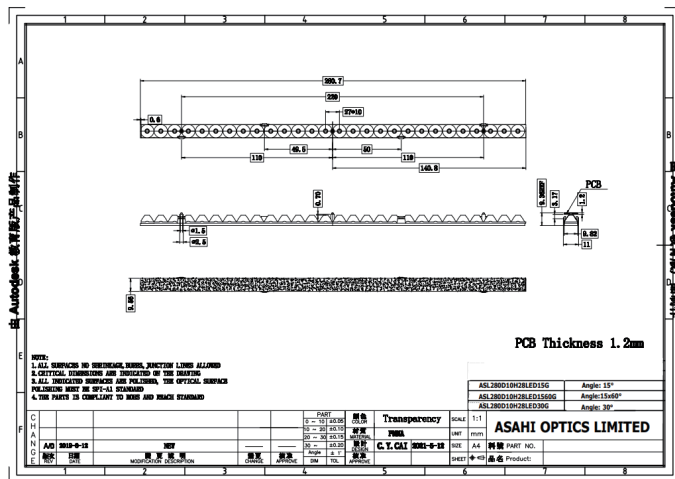
1. The lens is specifically designed to be compatible with a linear lighting fixture with a width of 10mm. It is engineered to match the dimensions and mounting requirements of the fixture for proper installation.
2. The lens provides a narrow beam angle of 15 degrees. This means that the light emitted from the fixture is focused and concentrated within a relatively small angle, allowing for precise and directional illumination.
3. The lens helps control the direction and spread of light emitted by the fixture, ensuring that the light is efficiently distributed in the desired area or surface within the 15-degree beam angle. It provides a focused and concentrated illumination pattern.
4. The lens is designed to maximize the efficiency of the lighting system. It helps extract the most light from the light source, directing it in the desired direction and reducing light loss or wastage within the 15-degree beam angle.



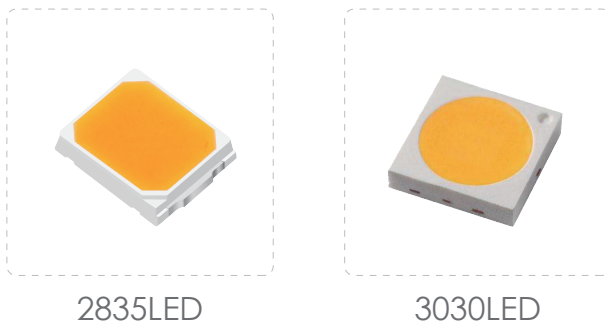
LENS LIGHT DISTRIBUTION & APPLICATION



LENS DRAWING



LED TYPE



LED BRAND

