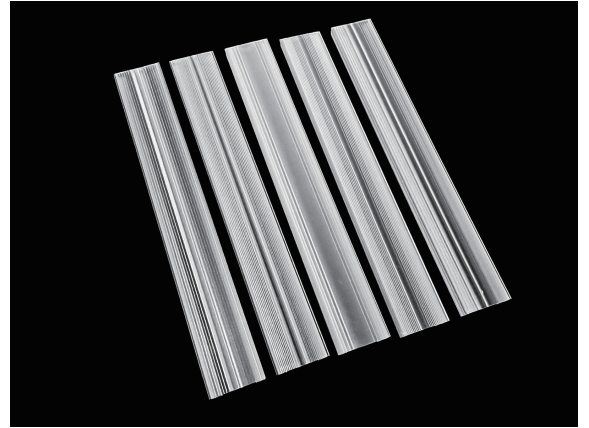


40mm series Extrusion linear Lens

Model:	ASEL40D
Size:	40 Width
Height:	-
Beam Angle:	40°, 60°, 90°, A25°, DA25°
Material:	PMMA
Transmittance:	> 90%
LED Type:	2835/3030LED

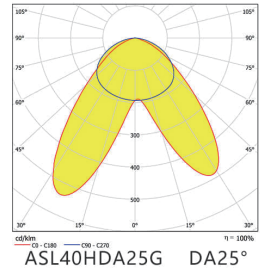
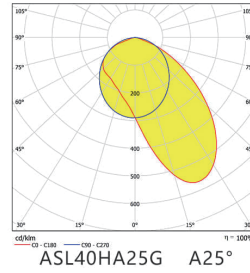
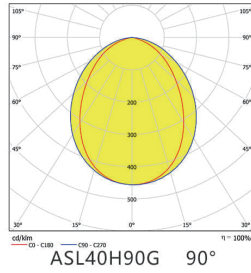
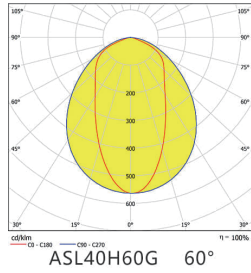
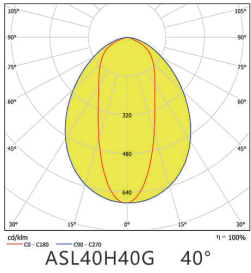


FEATURES

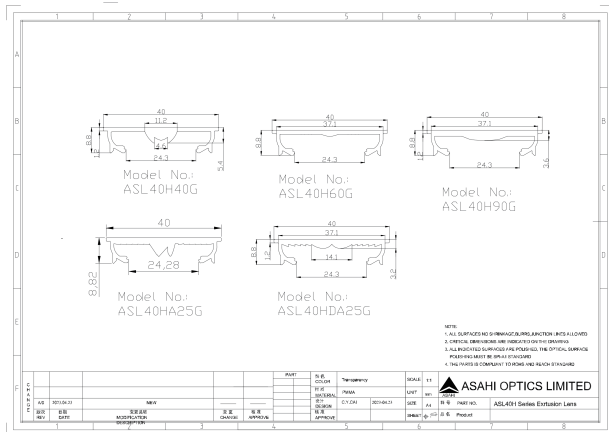
1. Guaranteed compatibility with the widely-adopted Zhaga standard (20mm-24mm single-row PCBs), cutting down your development time.
2. Crafted from high-quality PMMA for outstanding clarity and robust, long-lasting performance.
3. Efficiency: over 90% light efficiency to achieve brighter output and lower energy consumption.
4. is available in 40mm widths to provide design flexibility for various applications.



LENS LIGHT DISTRIBUTION & APPLICATION



LENS DRAWING



LED TYPE



2835LED



3030LED

LED BRAND

