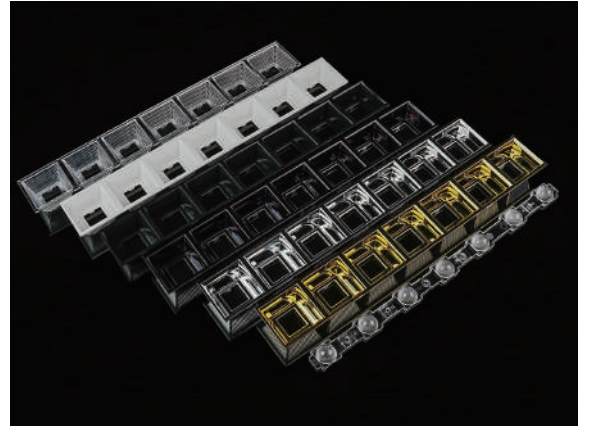


1x7 Linear Lens Series

Model:	ASL280D40H7LED30G/3070G/50G/80G
Size:	280x40(mm)
Height:	20.2mm
Beam Angle:	30°,30x70°,50°,80°
Material:	PMMA+PC
Transmittance:	> 93%
LED Type:	3030/ 5050/ 5630LED

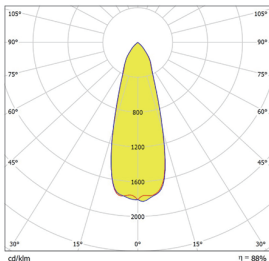


FEATURES

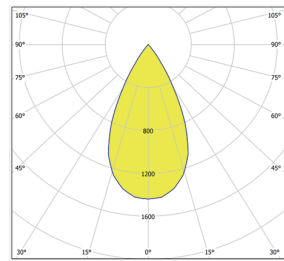
1. The 1X7 linear lens array is designed with the optical grill for better UGR and anti-glare control.
2. For each optical surface can put multiple LEDs inside to achieve the dimmable lighting solution.
3. The optical design is also compatible with different LED size from 2835, 3030 LEDs up to 5630, 5050 LEDs.
4. The 1x7 linear lens can be recessed mounted, suspend mounted, or surface mounted upon different installing requirements.
5. The 1X7 linear lens can fit with 2ft. or 4ft. dimension option with screw-less assembly.
6. **High-Efficiency Optics:**
This 1x7 lenses incorporate high-efficiency optics, maximizing light utilization and distribution control. These lenses efficiently capture and direct the light emitted from LEDs, ensuring optimal usage and minimizing light loss. The result is improved energy efficiency and enhanced overall lighting performance.



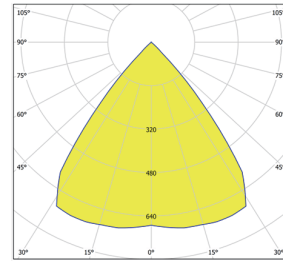
LENS LIGHT DISTRIBUTION & APPLICATION



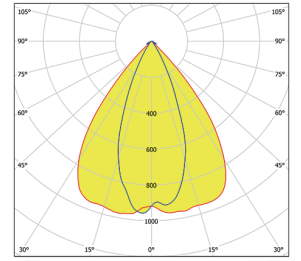
ASL280D40H7LED 30°



ASL280D40H7LED 50°

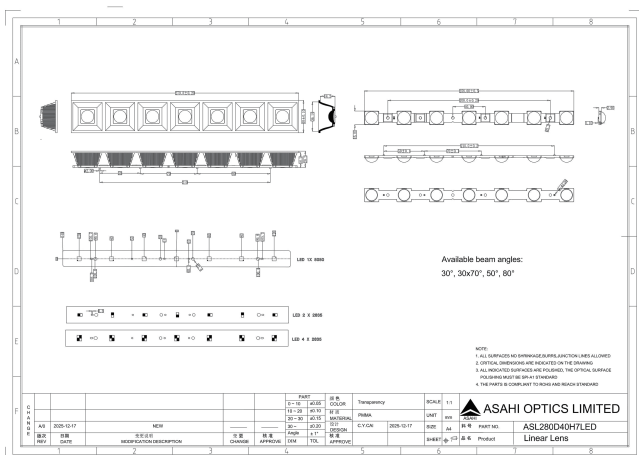


ASL280D40H7LED 80°



ASL280D40H7LED 30x70°

LENS DRAWING



LED TYPE



2835LED



3030LED

LED BRAND

