

1x5 Linear Lens Series

Model:	ASL200D40H5LED30G/3070G/50G/80G
Size:	200x40(mm)
Height:	20.2mm
Beam Angle:	30°,30x70°,50°,80°
Material:	PMMA+PC
Transmittance:	>93%
LED Type:	2835/3030/5050LED

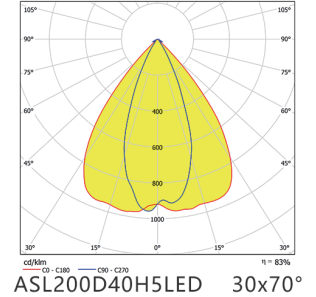
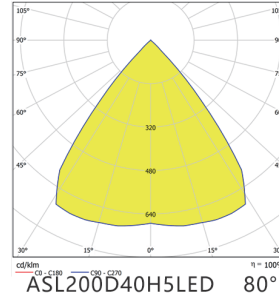
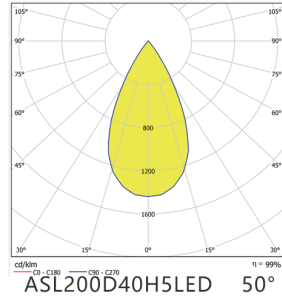
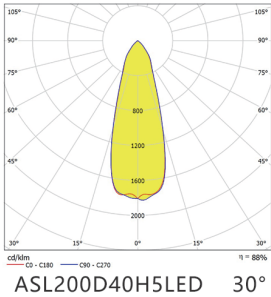


FEATURES

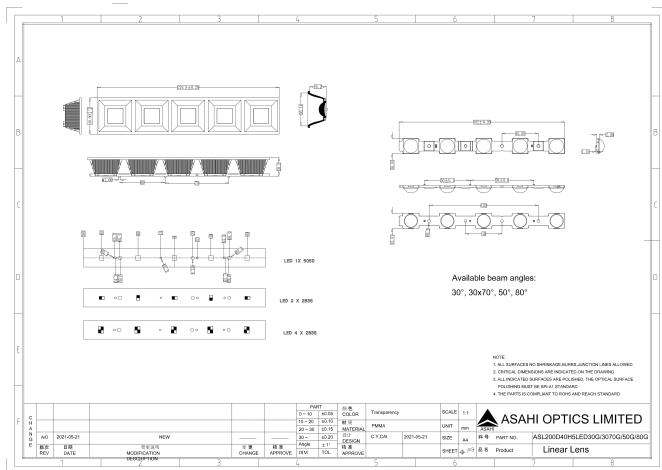
1. The 1x5 linear lens array is designed with an optical grill for better UGR and anti-glare control.
2. The 1x2 linear optics compatible with 2835, 3030 LEDs up to 5630, 5050 LEDs.
3. The 1x5 linear lens with ZHAGA standard PCB can be recessed mounted, suspend mounted, or surface mounted upon different installing requirements.



LENS LIGHT DISTRIBUTION & APPLICATION



LENS DRAWING



LED TYPE



2835LED



3030LED

LED BRAND

