

## 344mm LED UFO High Bay Light LENS 60°90°

Model:	UFO344D60G, 90G, 120G-200W-K176
Size:	Ø344mm
Height:	6.5mm
Beam Angle:	60°, 90°, 120°
Material:	PC-1250Z
Transmittance:	>88%
LED Type:	2835/ 3030LED



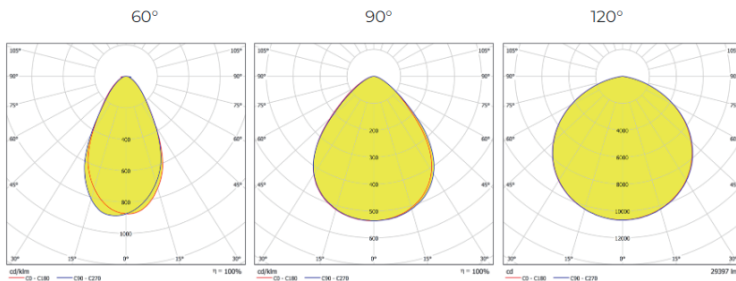
## FEATURES

1. 344mm large diameter UFO lens design, can accommodate large-size sensors.

2. The 120-degree plane UFO lens design allows the LED to be freely placed on a flat surface. You can achieve a more uniform light distribution, optimize lighting effects, and meet the requirements of different environments and applications.



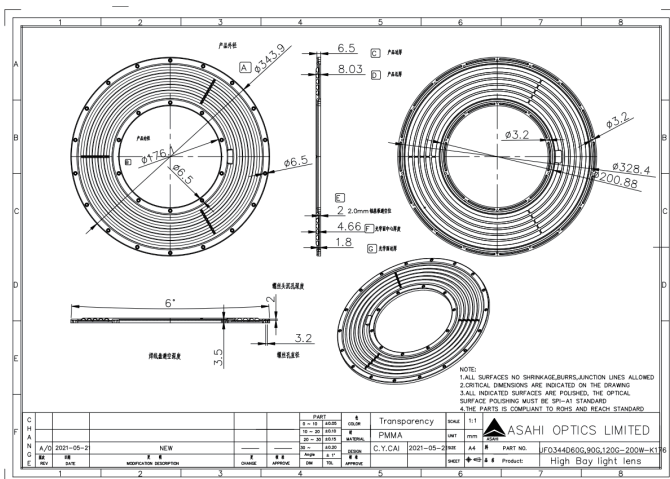
## LENS LIGHT DISTRIBUTION & APPLICATION



60°,90°,120°



## LENS DRAWING



## LED TYPE



2835LED



3030LED

## LED BRAND

