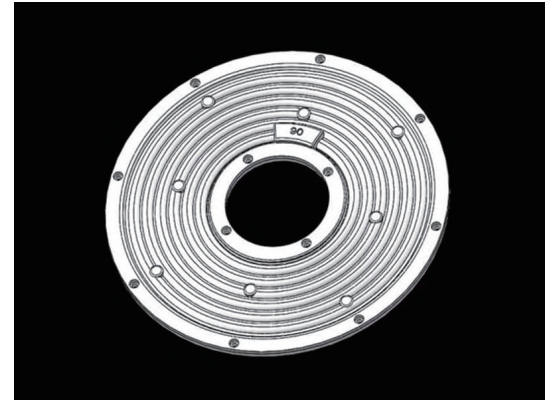


100W Industrial Flood Lights Led Lens 90° For Workshop Light

Model:	UFO233D90G-100W-K70
Size:	Ø233mm
Height:	8.8mm
Beam Angle:	90°
Material:	PC-1250Z TEIJIN
Transmittance:	>88%
LED Type:	2835/ 3030LED

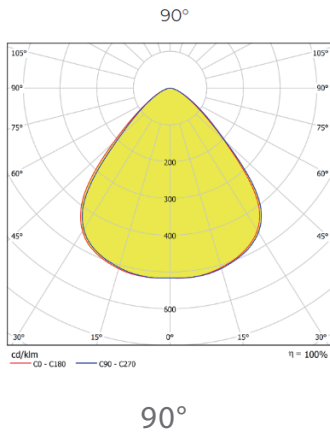


FEATURES

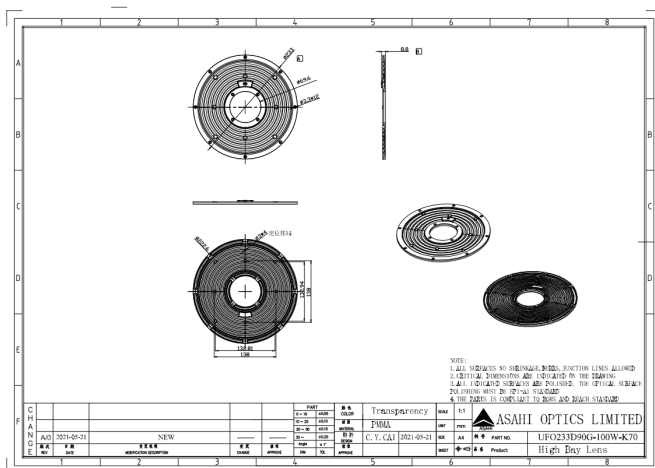
- 1.The lens with 233diameter UFO lens particularly in high bay lights designed for industrial or commercial spaces.
- 2.Industrial flood lamps are usually used for indoor and outdoor large area lighting, with good durability and high efficiency.
- 3.The 90 degree Angle provides a wide range of light and is suitable for lighting large areas such as workshops.



LENS LIGHT DISTRIBUTION & APPLICATION



LENS DRAWING



LED TYPE



2835LED



3030LED

LED BRAND

