

Sensor Type 184mm 100W UFO LED High Bay Light Lens 60°,90°,120°

Model:	UFO184D60G,90G-100W-B26
Size:	Ø184mm
Height:	10.3mm
Beam Angle:	60°,90°,120°
Material:	PC-1250Z
Transmittance:	88%
LED Type:	2835/ 3030LED



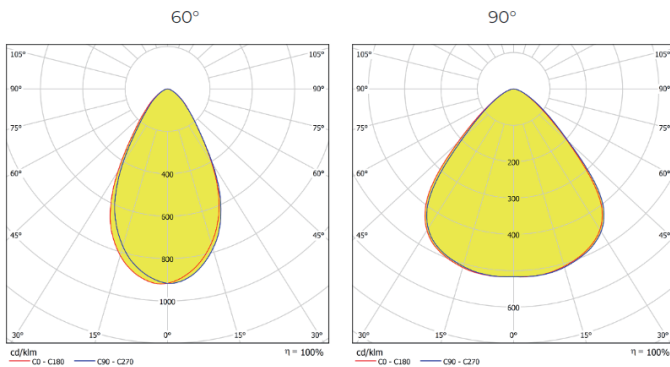
FEATURES

1. Industrial lighting applications utilize 184mm diameter UFO lenses with a power rating of 100W, providing beam angles of 60°, 90°, 120°.

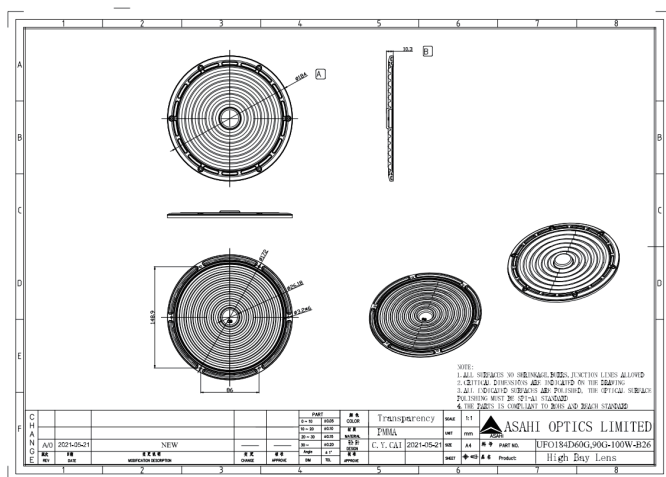
2. The small diameter UFO lens design can highly concentrate the light, forming a close and concentrated beam. This allows light to be more accurate to the target area, providing more accurate and concentrated lighting effects. This is very useful in the scenario of specific areas or point lighting requirements that require strong lighting.



LENS LIGHT DISTRIBUTION & APPLICATION



LENS DRAWING



LED TYPE



2835LED



3030LED

LED BRAND

