

ATVH57-64-46W TV back light lens for AD light box

Model:	ATVH57-64-46W
Size:	Ø15.65mm
Height:	5.9mm
Beam Angle:	160°
Material:	PMMA
Transmittance:	>93%
LED Type:	2835/ 3030LED

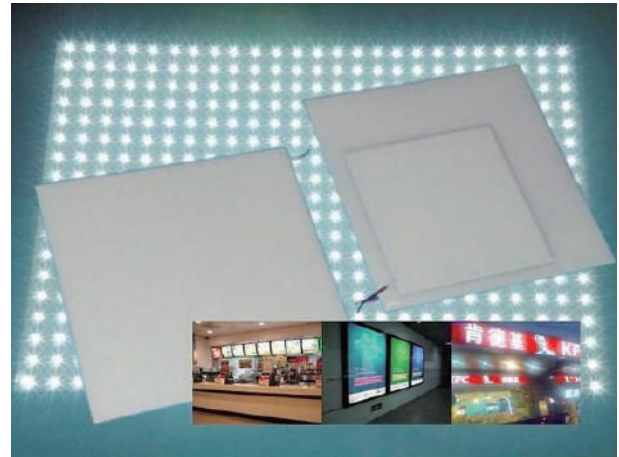


FEATURES

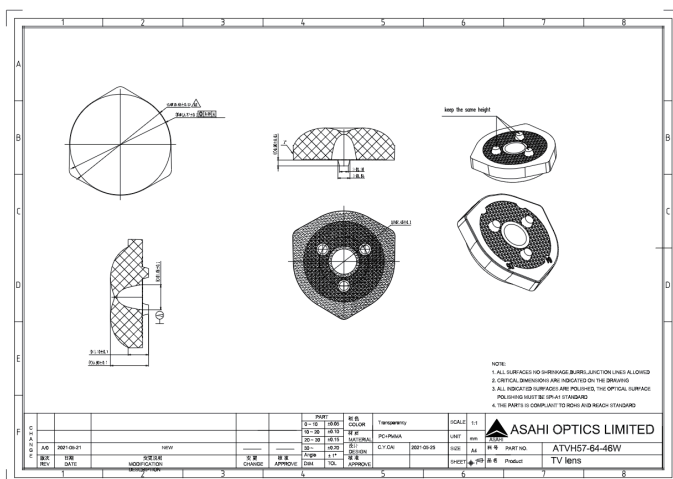
1. TV back light lens is a specialized lens that is placed behind the LED lights to diffuse and evenly distribute the light across the screen surface. It can be used for AD light box or light bar.
2. The TV lens helps to create a more uniform and visually appealing backlighting effect, enhancing the overall viewing experience.
3. The lens is typically made of high-quality PMMA materials that are designed to withstand heat and provide long-lasting performance.



LENS LIGHT DISTRIBUTION & APPLICATION



LENS DRAWING



LED TYPE



2835LED



3030LED

LED BRAND

