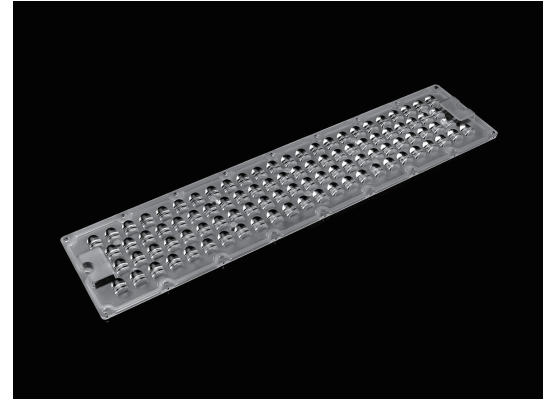


Stadium lighting lens with 96LEDs featuring TIII very short throw

Model:	ARHB520D96LEDT3VS
Size:	520x116(mm)
Height:	13.8mm
Beam Angle:	T3VS
Material:	PC-1250Z
Transmittance:	>90%
LED Type:	3535/ 5050LED

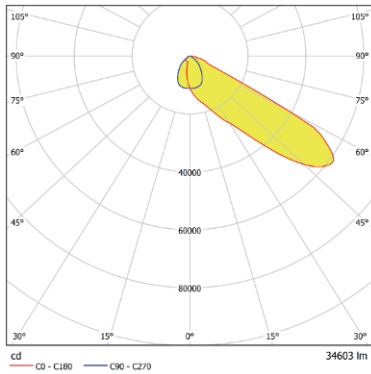


FEATURES

- 1.High Power lens module for Stadium lighting and Floodlight 250W/500W/up to 1500W with different optical beam angles T3VS, 20°, 40°, 60°, 90°
- 2.The high-power lens modules are designed for 5050LED size with IP66 gasket waterproof and it can be reached to IK10 grade.
- 3.The high-power lens modules are widely used for large areas such as outdoor sports lighting, tower crane lighting, harbor terminal lighting, industrial lighting, etc.
- 4.TIII very short throw ensures that the light emitted from the 96 LEDs is directed accurately and efficiently, minimizing light loss and maximizing the lighting coverage.



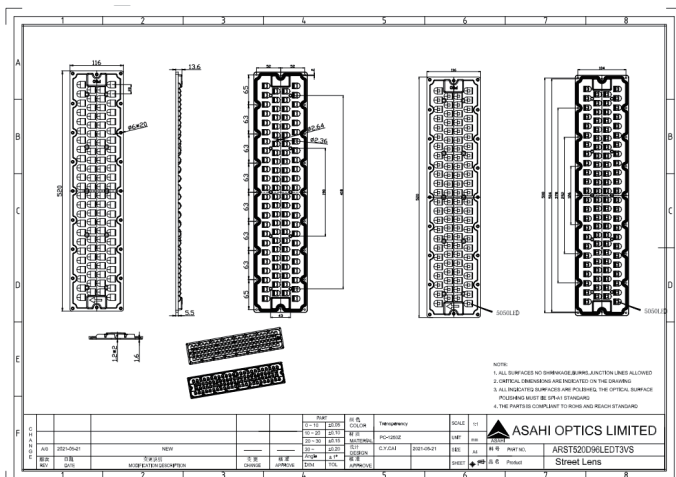
LENS LIGHT DISTRIBUTION & APPLICATION



T3VS



LENS DRAWING



LED TYPE



3535LED



5050LED

LED BRAND

