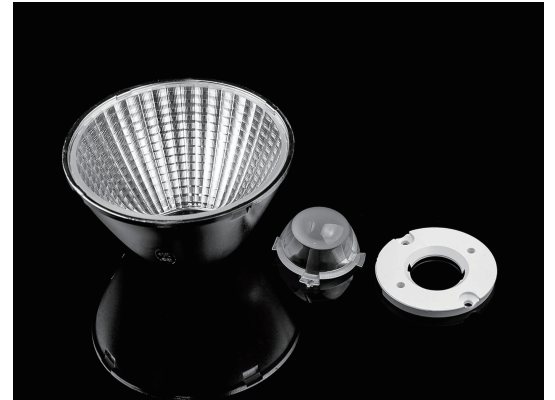


## 91mm COB LED Reflector With Holder With View Angle 15° 25°38°

Model	AR9146T
Size:	Ø91mm, Ø31mm
Height:	45.5mm
Beam Angle:	15°, 25°, 38°
Material:	PC+Aluminum Coating
Transmittance:	>88%
LED Type:	COB LED

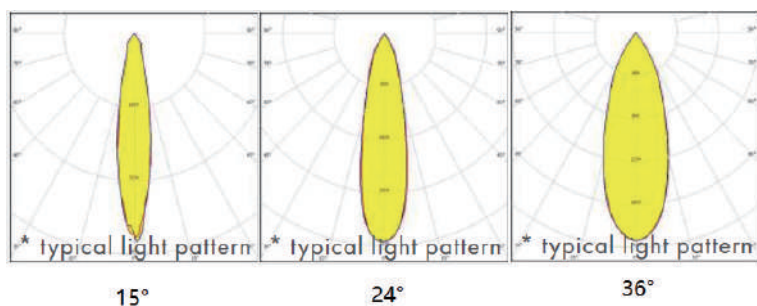


### FEATURES

- 1, 91mm COB LED Reflector With Holder.
- 2, COB lenses are available in different beam angle options, allowing for precise control over the spread of light. Common beam angles include narrow spot (less than 20 degrees), medium flood (around 30-45 degrees), wide flood (around 60 degrees), and elliptical or asymmetric beams for specialized applications.
- 3, COB lenses are designed to maximize the efficiency of the COB LED by minimizing light loss and optimizing light distribution.



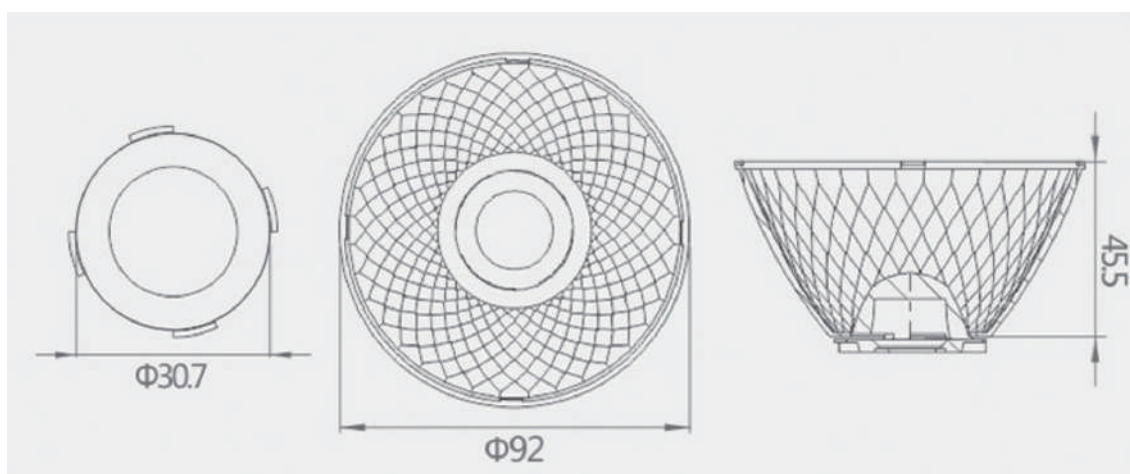
## LENS LIGHT DISTRIBUTION & APPLICATION



15°, 25°, 38°



## LENS DRAWING



## LED TYPE



COB LED



COB LED

## LED BRAND

