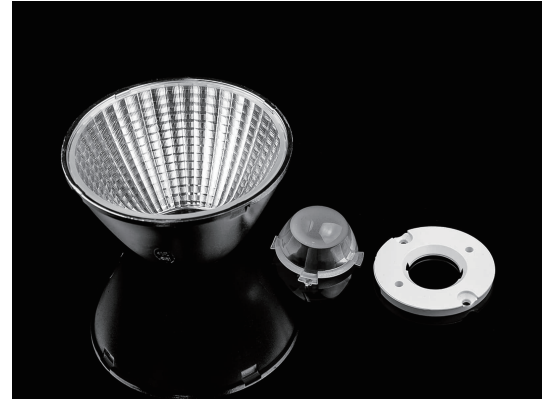


69mm Spot Light Reflector 15° 25° 38° For Spot Lights

Model	AR6934T
Size:	Ø69.0mm, Ø28.4mm
Height:	34.2mm
Beam Angle:	15°, 25°, 38°
Material:	PC+Aluminum Coating
Transmittance:	>88%
LED Type:	COB LED

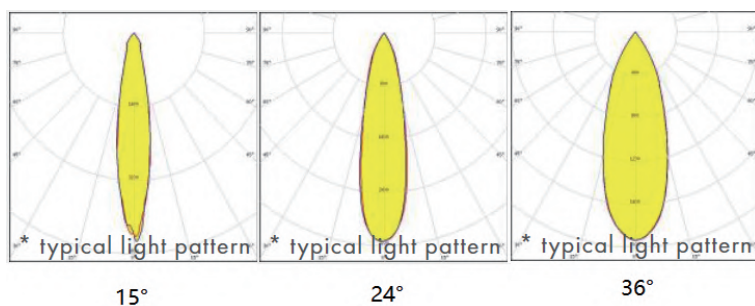


FEATURES

- 1, 69mm Spot Light Reflector 15° 25° 38° For Spot Lights. COB LED reflectors are commonly used for lighting parking lots.
- 2, The COB LED reflectors help to provide uniform and efficient illumination, ensuring visibility and safety for drivers and pedestrians.
- 3, They can be installed on poles or integrated into overhead lighting fixtures to achieve optimal lighting coverage.



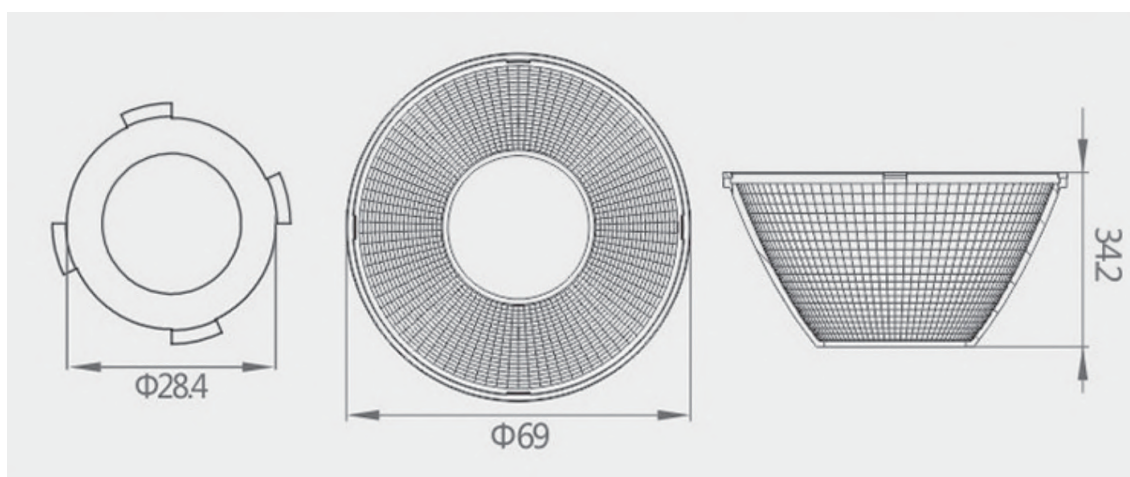
LENS LIGHT DISTRIBUTION & APPLICATION



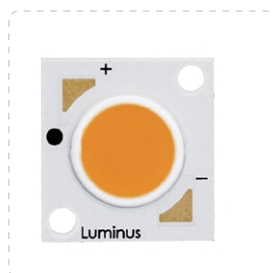
15°, 25°, 38°



LENS DRAWING



LED TYPE



COB LED



COB LED

LED BRAND

