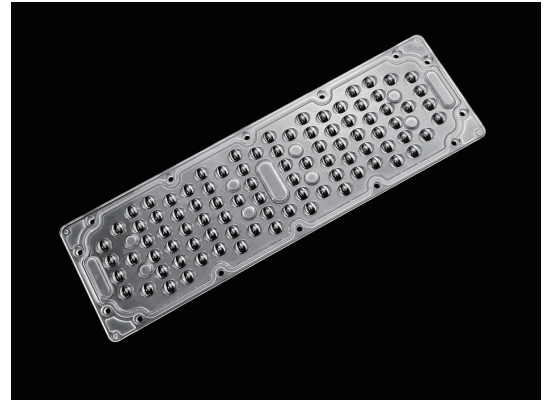


## 90LED lens module 3030LED for street light beam TYPEIII Medium

Model:	ARST256D90LEDT3M
Size:	256.5x78.5(mm)
Height:	6.4mm
Beam Angle:	T3M
Material:	PC-1250Z
Transmittance:	>93%
LED Type:	3030 LED

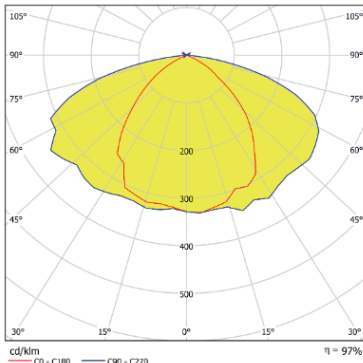


### FEATURES

1. The 90LED lens module (3030LED) is a high-performance optical component designed for TYPE III Medium beam street lights. With dimensions of L256.0mm x W78.5mm, a height of 7.35mm and a beam angle of T3M, it is able to meet the diverse needs of street lighting and architectural lighting.
2. The lens module is made of PC-1250Z material, with a transmittance of more than 93%, ensuring efficient light transmission. In addition, its IP66 protection rating makes it resistant to dust and moisture intrusion, suitable for long-term outdoor use.



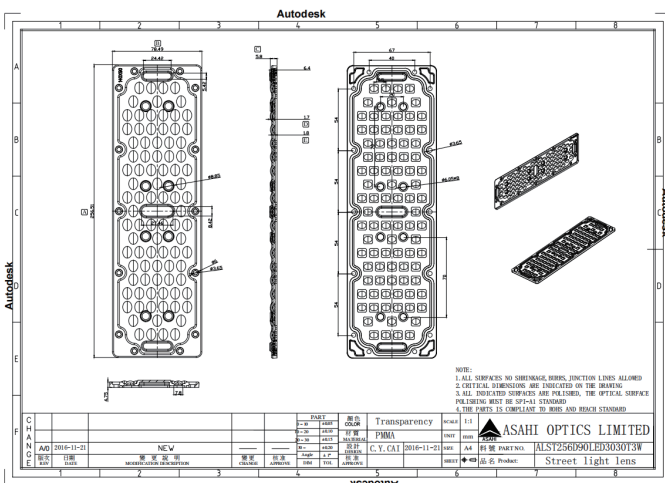
## LENS LIGHT DISTRIBUTION & APPLICATION



T3M



## LENS DRAWING



## LED TYPE



3030LED



3030LED

## LED BRAND

