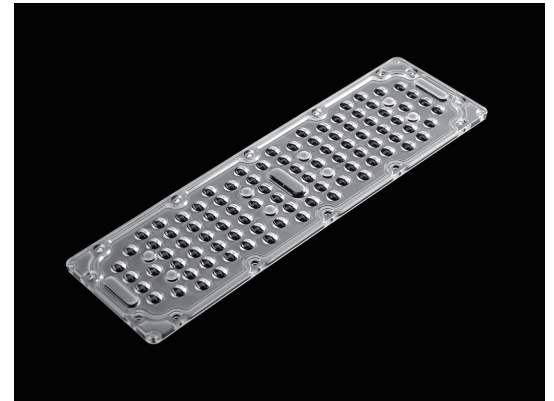


IP66 Waterproof 90in1 LED Module Lens 3030LED TYPE II Medium

Model:	ARST256D90LEDT2M
Size:	256.5x78.5(mm)
Height:	7.35mm
Beam Angle:	T2M
Material:	PC-1250Z TEIJIN
Transmittance:	>93%
LED Type:	3030 LED

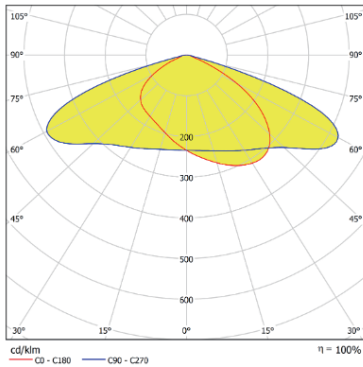


FEATURES

1. Angle of 80x150°, suitable for streetlight illumination.
2. Constructed with UV-resistant PC material, ensuring excellent durability and resistance to yellowing.
3. The lens holds an IP66 rating, with a high level of protection against dust and water ingress. This makes it suitable for outdoor applications where exposure to challenging weather conditions is a concern, ensuring reliable performance in various environments.



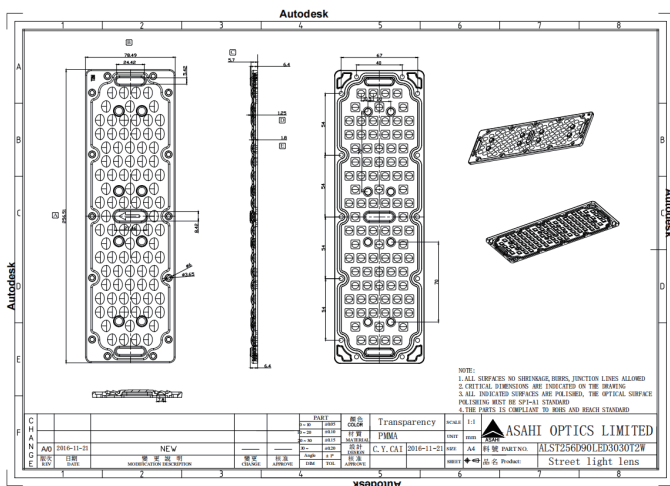
LENS LIGHT DISTRIBUTION & APPLICATION



T2M



LENS DRAWING



LED TYPE



3030LED



3030LED

LED BRAND

