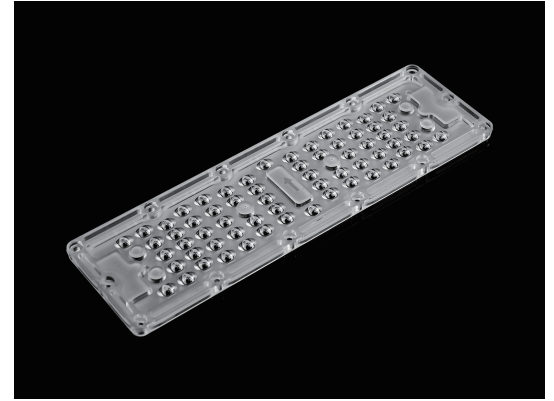


64 Leds In 1 Optical Lens T2M for street lighting

Model:	ARST236D64LEDT2M
Size:	236x75(mm)
Height:	7.1mm
Beam Angle:	Type II Medium
Material:	PC-1250Z TEIJIN
Transmittance:	>90%
LED Type:	3030 LED

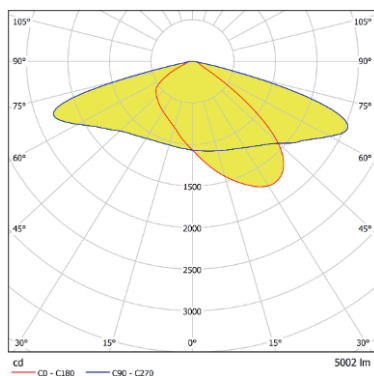


FEATURES

1. The high efficiency and powerful lumen output to meet customers' required power.
2. Type II beam angle is commonly used in streetlights to provide efficient and focused illumination on roadways.



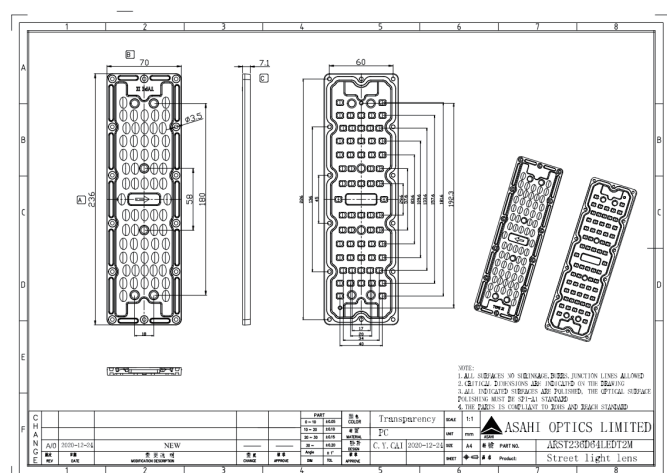
LENS LIGHT DISTRIBUTION & APPLICATION



Type II Medium



LENS DRAWING



LED TYPE



3030LED



3030LED

LED BRAND

