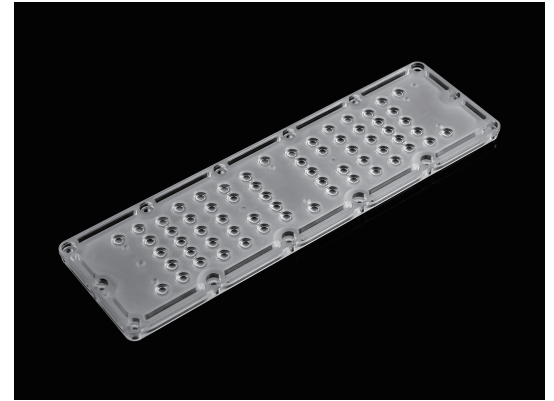


64LEDs lens 30° 3030 LED for High Bay light

Model:	ARHB236D64LEDT30
Size:	236x70(mm)
Height:	7.1mm
Beam Angle:	30°
Material:	PC-1250Z TEIJIN
Transmittance:	>90%
LED Type:	3030 LED



FEATURES

1. 64LEDs lens 30° is designed specifically for high bay lights, which is a popular choice for industrial and commercial lighting projects.
2. The lens is designed with 3030 LED. The 3030LED chips used in this product are known for their high brightness, energy efficiency, and long lifespan.
3. A specific beam angle of 30 degrees is ideal for applications where a narrower beam angle or light projection is desired, such as spotlights, track lighting, and architectural lighting.



