

## 46LEDs LENS for Street Lighting T2M

Model:	ALST46LED5050T2M-cutoff
Size:	220x110(mm)
Height:	8.20mm
Beam Angle:	T2M-cutoff
Material:	PC
Transmittance:	>90%
LED Type:	5050LED

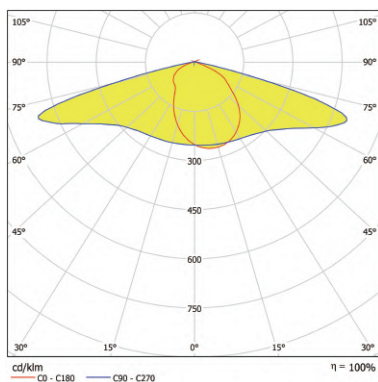


## FEATURES

1. This 46LEDs lens is developed for TYPE II-Medium(T2M) CUT-OFF and BUG standard, which ensures that the luminaires with excellent backlight control, illuminance uniformity, and cutoff light distribution.
2. The street light optical diagram T2M-cutoff is strictly required by Brazil government have to pass IMMETRO certification.



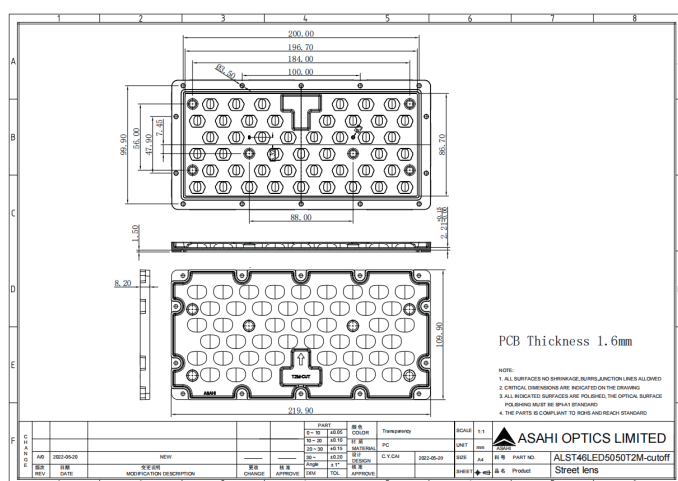
## LENS LIGHT DISTRIBUTION & APPLICATION



T2M-cutoff



## LENS DRAWING



## LED TYPE



5050LED



5050LED

## LED BRAND

