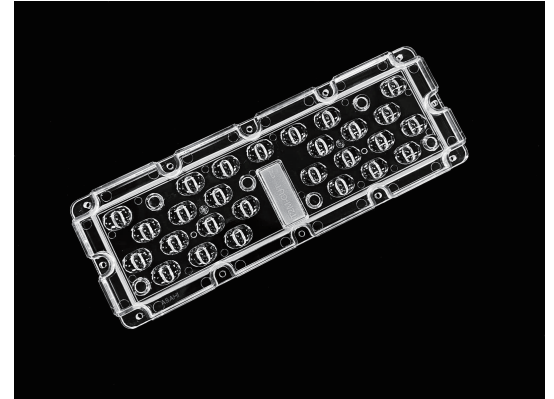


27LEDs LENS for Street Lighting T2M

Model:	ALST27LED5050T2M-cutoff
Size:	220x78(mm)
Height:	8.04mm
Beam Angle:	T2M-cutoff
Material:	PC
Transmittance:	>90%
LED Type:	5050LED

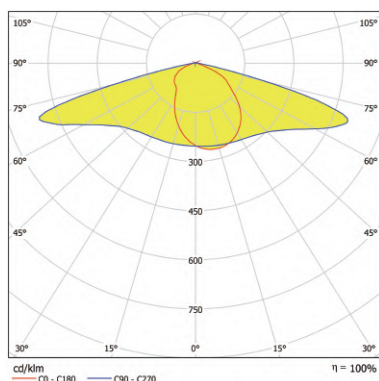


FEATURES

1. This 27LEDs lens is developed for TYPE II-Medium(T2M) CUT-OFF and BUG standard, which ensures that the luminaires with excellent backlight control, illuminance uniformity, and cutoff light distribution.
2. The street light optical diagram T2M-cutoff is strictly required by Brazil government have to pass IMMETRO certification.



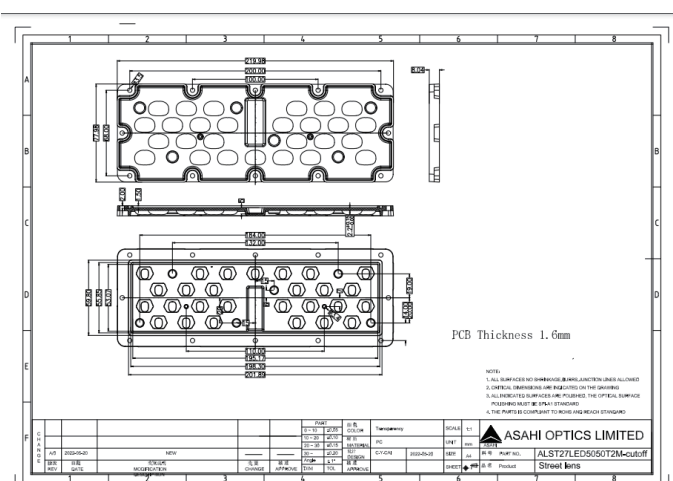
LENS LIGHT DISTRIBUTION & APPLICATION



T2M-cutoff



LENS DRAWING



LED TYPE



5050LED



5050LED

LED BRAND

