

22in1 Optical lens with Type IV Short Throw beam for area lighting

Model:	AJST304D22LEDT4S
Size:	294x87.5(mm)
Height:	8.6mm
Beam Angle:	TYPE4 Short
Material:	PC
Transmittance:	>88%
LED Type:	7070LED



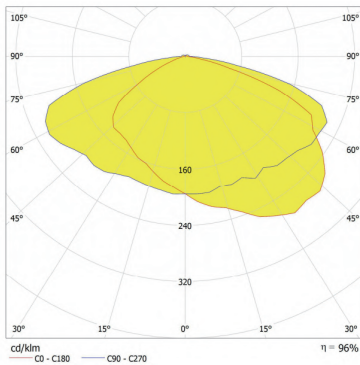
FEATURES

1. 304x87mm 22in1 TYPE IV Short Beam angle Lens.

2. The T4 short angle can be used for close area illumination. Scenes that require high intensity lighting over short distances with wide coverage. For example, parking lot lighting: light is concentrated in the parking area to avoid scattering to surrounding roads or buildings.



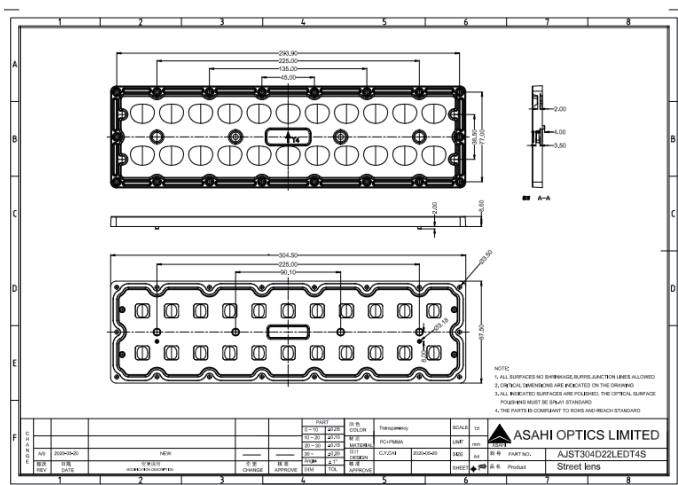
LENS LIGHT DISTRIBUTION & APPLICATION



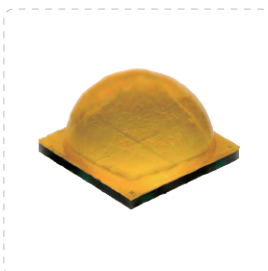
TYPE4 Short



LENS DRAWING



LED TYPE



7070LED



7070LED

LED BRAND

