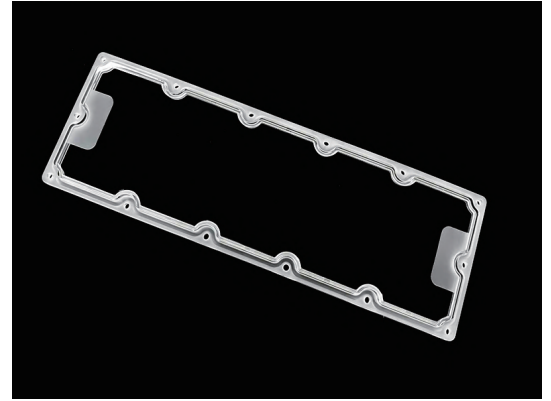


## 35 LEDs High Bay Lighting Lens Module with 120° Beam Angle

Model:	AJST275D35LED120G
Dimensions:	275x90(mm)
Height:	8.05mm
Beam Angle:	120°
Material:	PC
Transmittance:	>88%
LED Type:	5050LED



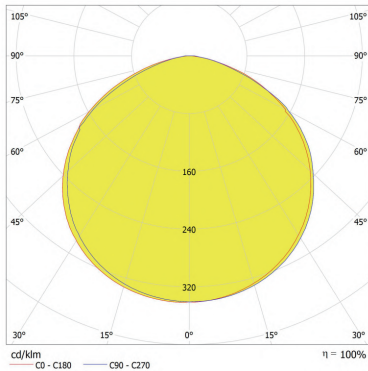
### FEATURES

1.The 120° beam angle allows effective coverage of large areas and is particularly suitable for high bay environments such as factories and warehouses.

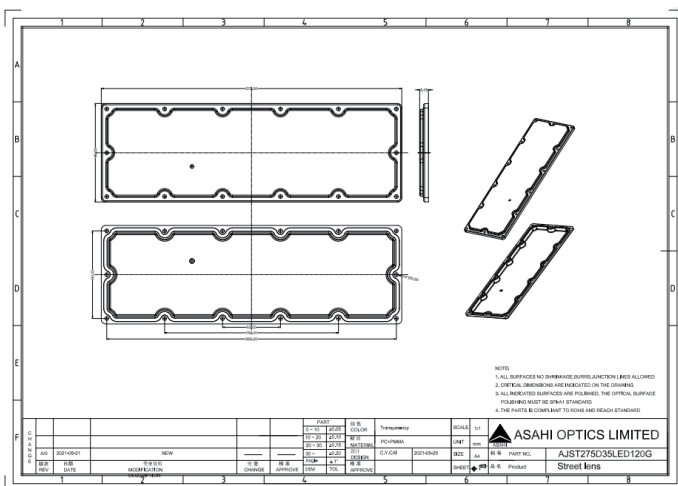
2.35 LED module LENS is the structure of flat cover, customers can design the number of LEDs according to the actual demand, which can be better adapted to the respective lighting demand.



## LENS LIGHT DISTRIBUTION & APPLICATION



## LENS DRAWING



## LED TYPE



5050LED



5050LED

## LED BRAND

