

28LEDs LENS for high bay Lighting 70 degree

Model:	AJST270D75H28LED70G
Size:	270x75(mm)
Height:	8mm
Beam Angle:	70°
Material:	PC-1250Z
Transmittance:	>90%
LED Type:	4x3030/5050LED

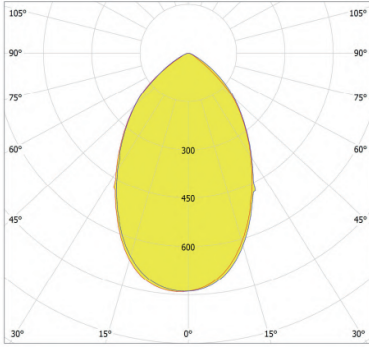


FEATURES

- 1.The 28LEDs lens is compatible with “4x3030”and“5050”LEDs.
2. The 270mm 28LEDs LENS is designed for high bay lighting that provides a 70-degree wide beam angle.
- 3.This lens has an IP rating of IP66, making it ideal for outdoor use as it is resistant to water and dust.



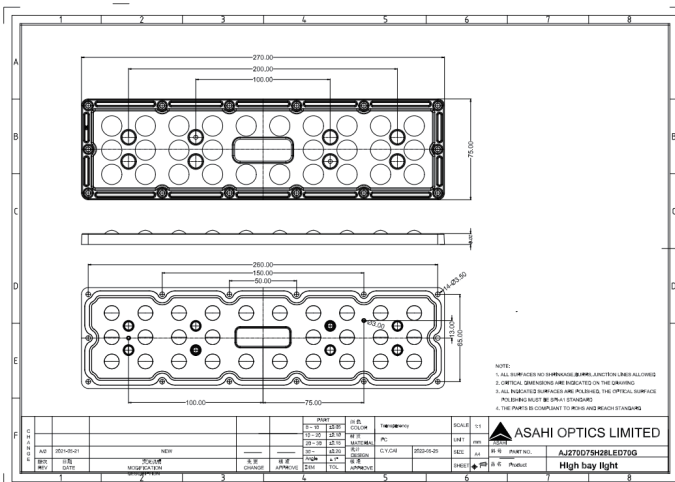
LENS LIGHT DISTRIBUTION & APPLICATION



70°



LENS DRAWING



LED TYPE



3030LED



5050LED

LED BRAND

