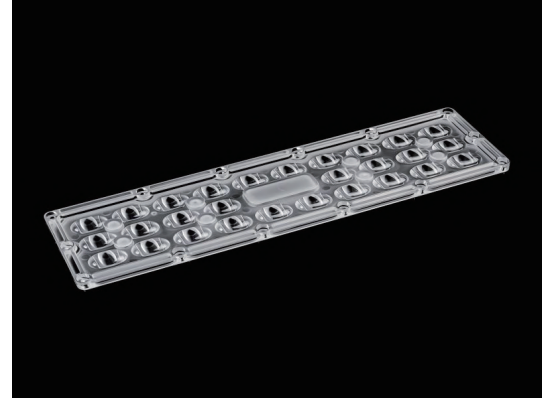


## 28LEDs LENS for Street Lighting T3M

Model:	AJST270D28LEDT3M
Size:	270x75(mm)
Height:	8mm
Beam Angle:	Type III
Material:	PMMA , PC-1250Z
Transmittance:	>90%
LED Type:	4x3030/ 5050LED

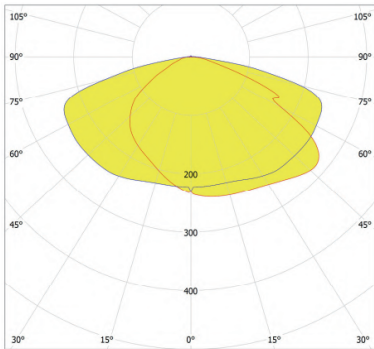


## FEATURES

1. TYPE 3 lenses are typically used in street lighting fixtures, providing a wider distribution of light that is ideal for illuminating roadways, sidewalks, and bike paths.
2. The TYPE 3 lens design helps to minimize glare, light pollution, and dark spots, creating a well-lit and safe environment for pedestrians and drivers.
3. TYPE 3 street lighting lenses are a popular choice for municipal lighting projects, as they offer a balance of visibility, safety, and energy efficiency.



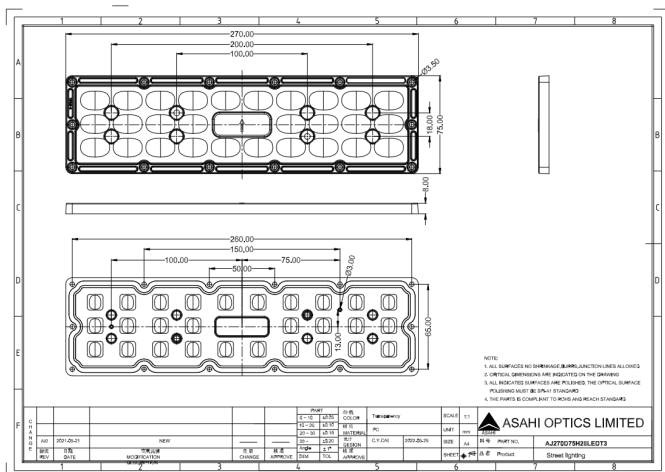
## LENS LIGHT DISTRIBUTION & APPLICATION



Type III



## LENS DRAWING



## LED TYPE



3030LED



5050LED

## LED BRAND

