

28LEDs LENS for Street Lighting T2

Model:	AJST270D28LEDT2
Size:	270x75(mm)
Height:	8mm
Beam Angle:	Type II
Material:	PC-1250Z
Transmittance:	>90%
LED Type:	4x3030/5050LED

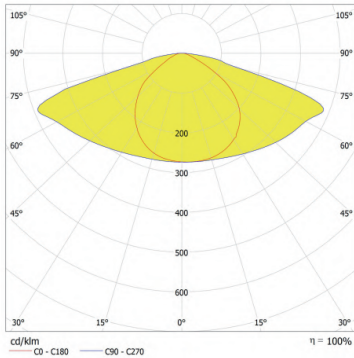


FEATURES

- 1.The 28LEDs lens is compatible with "4x3030"and"5050"LEDs.
2. IP66 rated for dust and water resistance, making it suitable for use in indoor and outdoor environments.
3. This street lens is made from high-quality PC material with a temperature resistance of up to 120°C, ensuring long-term durability and stability.



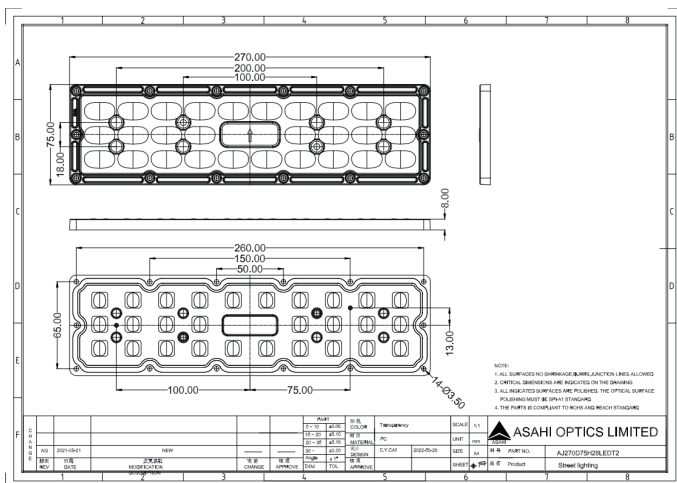
LENS LIGHT DISTRIBUTION & APPLICATION



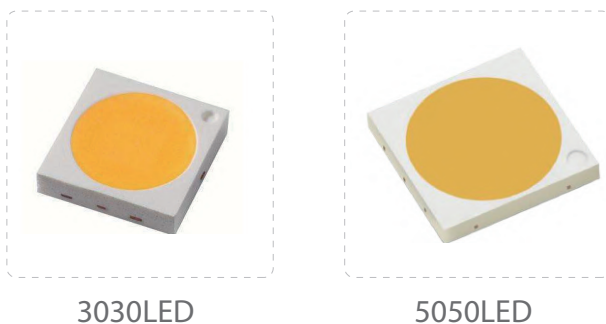
Type II



LENS DRAWING



LED TYPE



LED BRAND

