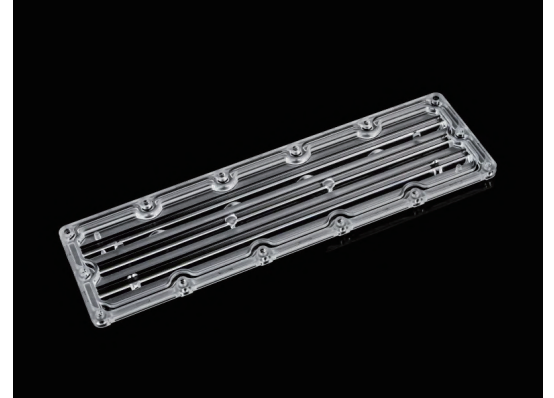


90x110 Degree Asymmetric Street Lighting 64 LEDs Lens For 3030LED

Model:	AJST236D64LED90110
Size:	236x70(mm)
Height:	7.5mm
Beam Angle:	90x110°
Material:	PC-1250Z
Transmittance:	>90%
LED Type:	2835/ 3030LED

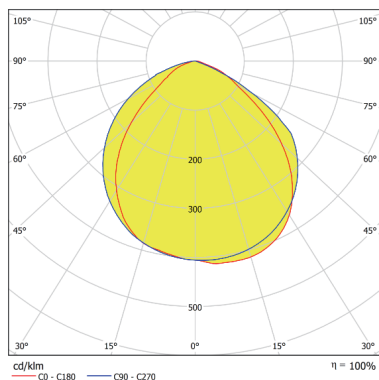


FEATURES

- 1.The linear design, coupled with a 90x110° beam angle, makes the product well-suited for flood lighting applications.
- 2.With an IP66 rating, the product demonstrates excellent resistance against dust and water ingress, makes it suitable for outdoor use, ensuring reliable performance even in challenging weather conditions.
- 3.This item is made of high quality PC material,with excellent UV resistance and a light transmittance exceeding 90%.



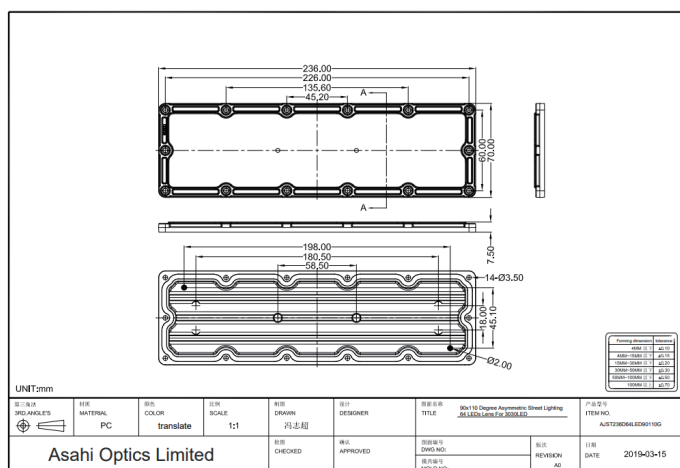
LENS LIGHT DISTRIBUTION & APPLICATION



90x110°



LENS DRAWING



LED TYPE



2835LED



3030LED

LED BRAND

