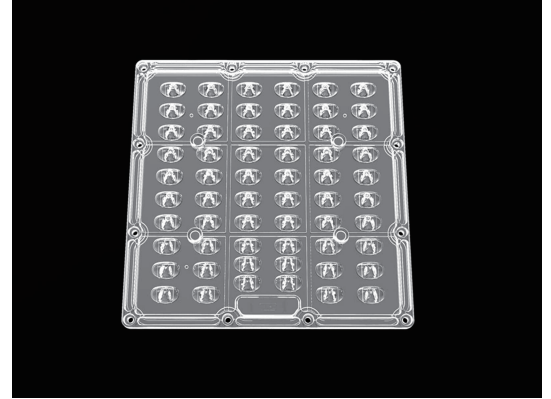


60LEDs LENS for Street Lighting T2M 5050LED

Model:	AJST175D60LEDT2M
Size:	175x175(mm)
Height:	7.30mm
Beam Angle:	Type II
Material:	PC
Transmittance:	>88%
LED Type:	5050LED

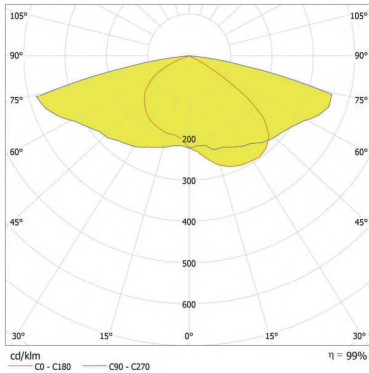


FEATURES

1. 60LEDs Street Lighting Lens
2. High Efficiency 60in1 Optics Optimized for 5050 LEDs, delivering powerful lumen output and uniform illumination for street lighting.
3. Ideal for roadways, highways, and urban lighting projects requiring high-performance LED optics.



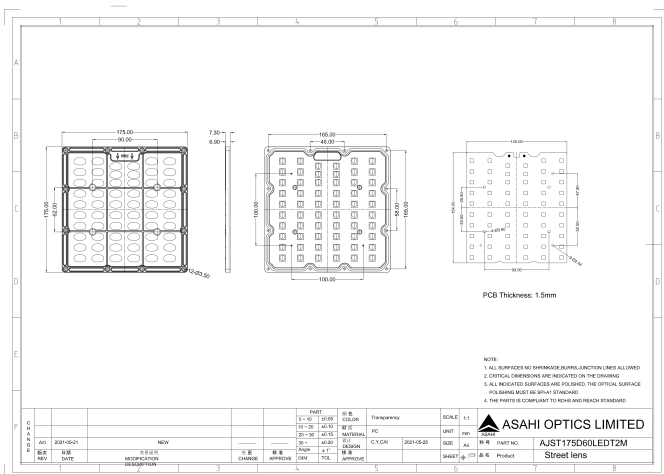
LENS LIGHT DISTRIBUTION & APPLICATION



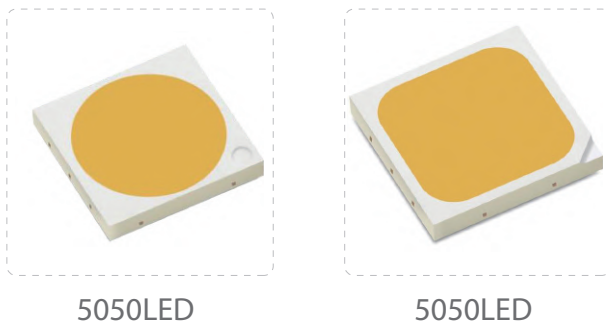
Type II



LENS DRAWING



LED TYPE



LED BRAND

