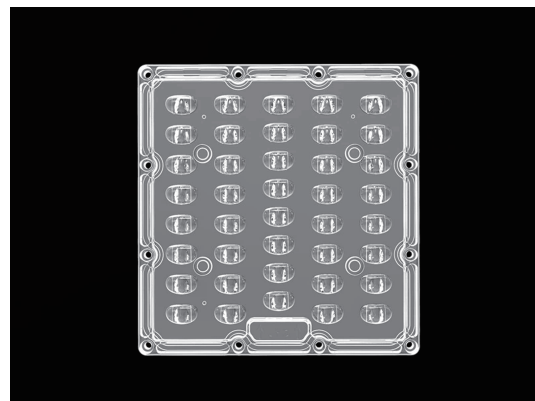


40LEDs LENS for Street Lighting T2M, T3M

Model:	AJST155D40LEDT2/T3
Size:	155x150(mm)
Height:	7.23mm
Beam Angle:	Type II, Type III
Material:	PC
Transmittance:	>88%
LED Type:	5050LED

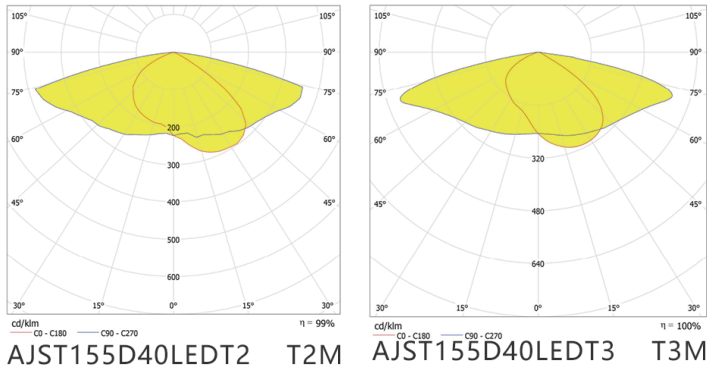


FEATURES

1. 40-in-1 Multi-Lens Configuration – Versatile and adaptable, allowing for customizable light distribution to suit various urban and suburban lighting needs.
2. Durable & Weather-Resistant Construction – Designed for long-term outdoor use, ensuring stable performance under harsh environmental conditions.



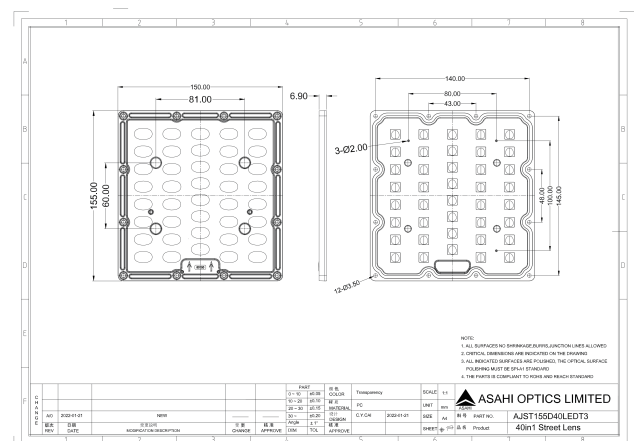
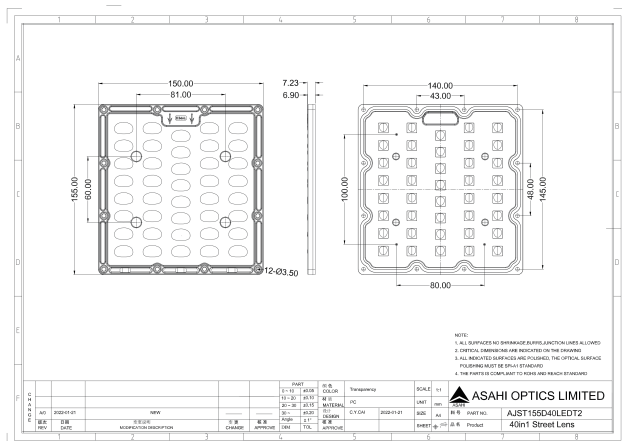
LENS LIGHT DISTRIBUTION & APPLICATION



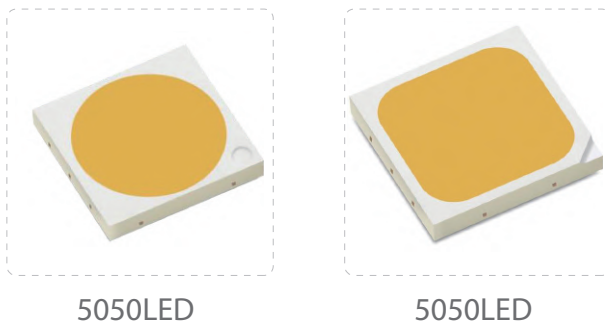
Type II, Type III



LENS DRAWING



LED TYPE



LED BRAND

