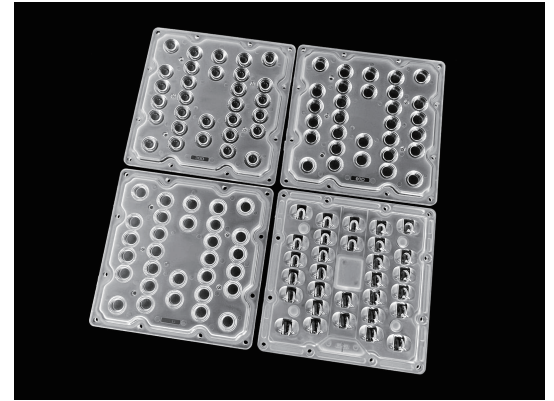


130mm 30LEDs LENS

| | |
|----------------|---------------------|
| Model: | AJHB130D30LED |
| Size: | 130x130(mm) |
| Height: | 8.3mm,9.04mm |
| Beam Angle: | 30°,60°,90°,80x140° |
| Material: | PC |
| Transmittance: | >90% |
| LED Type: | 5050LED |

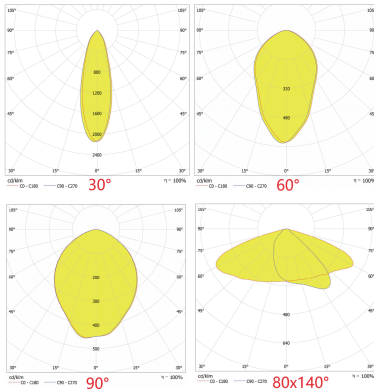


FEATURES

1. The 130mm 30-in-1 LED lens is a multi-functional optical accessory designed for LED lighting systems, commonly used high bay lighting, street lighting and architectural lighting.
2. With 130mm Diameter – A large lens size that ensures wide light coverage and high efficiency in beam control.



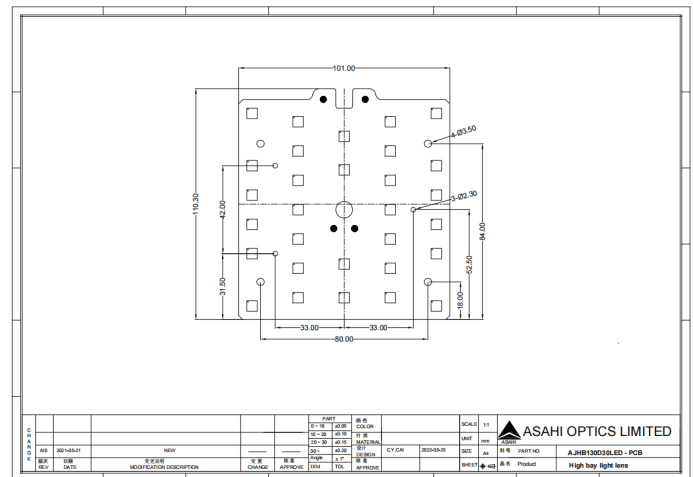
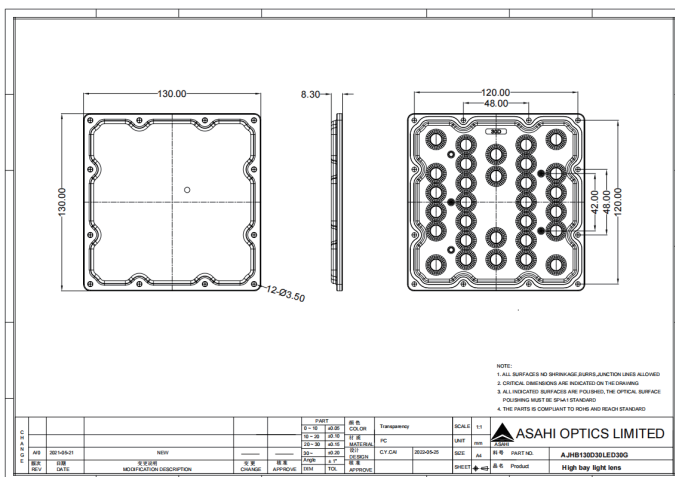
LENS LIGHT DISTRIBUTION & APPLICATION



30°, 60°, 90°, 80x140°



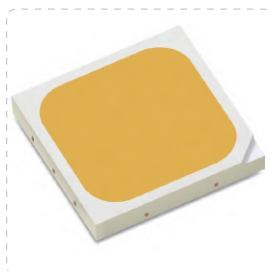
LENS DRAWING



LED TYPE



5050LED



5050LED

LED BRAND

