

135mm 4x6 Arrays Industrial Lighting Lens With 30° Beam

Model:	ALHB135D24LED30G
Size:	135x100(mm)
Height:	15.24mm
Beam Angle:	30°
Material:	PC-1250Z
Transmittance:	>90%
LED Type:	5050LED

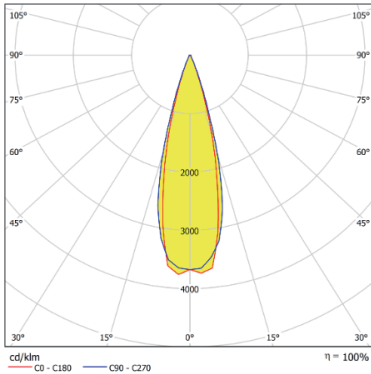


FEATURES

1. 4x6-30degree1. 4x6-30degree lens is designed to simultaneously match 5050 LED types, offers flexibility and options for customers, allowing them to choose the LED source that best suits their specific requirements and preferences.
2. With a focused 30° beam angle, this lens is particularly suitable for high bay lighting applications. The narrower beam angle ensures concentrated and directed illumination, making it ideal for environments with high ceilings where targeted and efficient lighting is essential.
3. It's made of PC material, exhibits high-temperature resistance up to 120°C. e lens is designed to simultaneously match 5050 LED types, offers flexibility and options for customers, allowing them to choose the LED source that best suits their specific requirements and preferences.



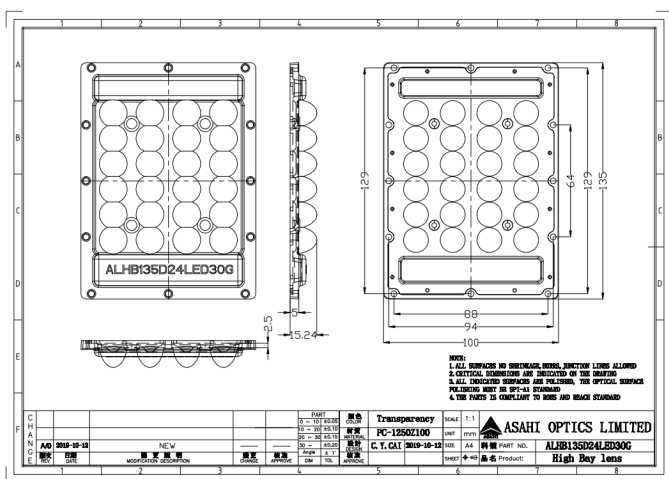
LENS LIGHT DISTRIBUTION & APPLICATION



30°



LENS DRAWING



LED TYPE



5050LED



5050LED

LED BRAND

