

135mm 24LEDs Lens 30x90° Beam For Linear Lighting

Model:	ALHB135D24LED3090G
Size:	135x100(mm)
Height:	13.8mm
Beam Angle:	30X90°
Material:	PC
Transmittance:	>90%
LED Type:	5050LED

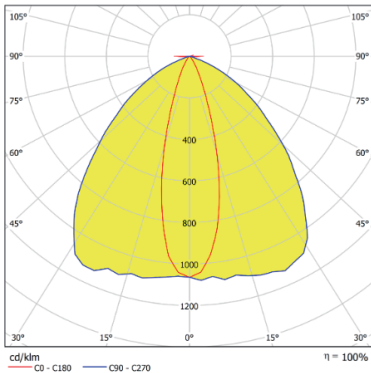


FEATURES

1. 4x6 with 30x90° beam angle, this lens is well-suited for illuminating the side of pedestrian walkways or paths, providing both safety and guidance effects.
2. The specific beam angle ensures focused illumination along the walkway, enhancing visibility and security.
3. This lens can be adapted to accommodate various brands of 5050 LEDs, provides flexibility and options for customers, allowing them to choose LED sources from different manufacturers



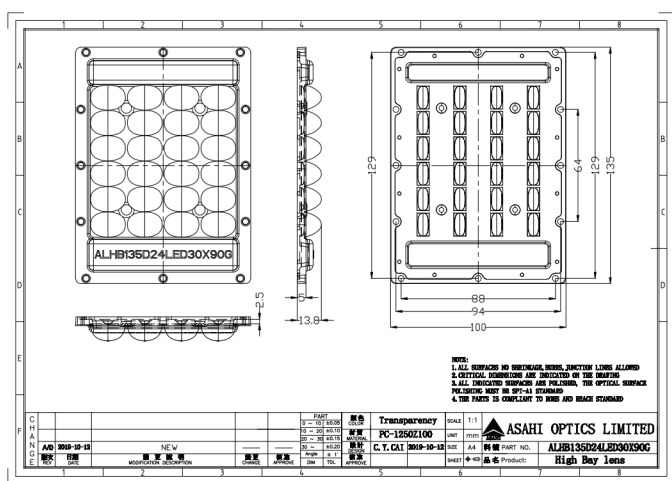
LENS LIGHT DISTRIBUTION & APPLICATION



30X90°



LENS DRAWING



LED TYPE



5050LED



5050LED

LED BRAND

