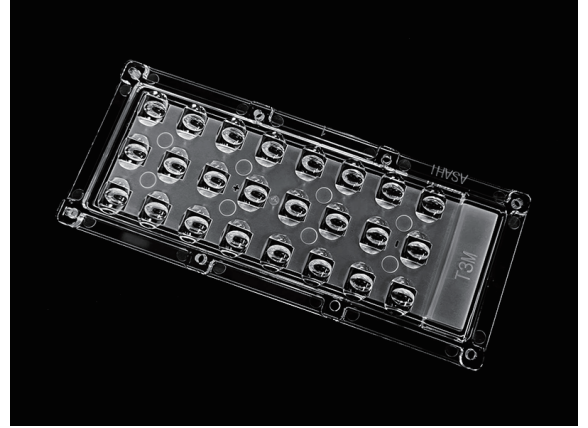


173mm 3x8 Type III Lens 5050 LEDs for Street light

Model:	ALST173D24LEDT3M
Size:	173x71.4mm
Height:	9.15mm
Beam Angle:	T3M
Material:	PC
Transmittance:	>88%
LED Type:	5050LED

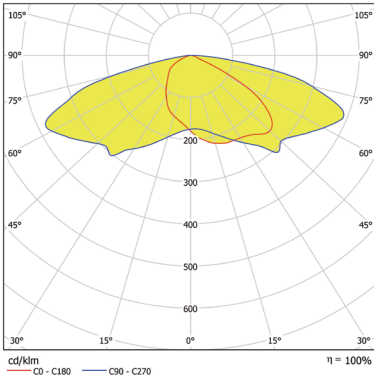


FEATURES

1. The 3X8 lens with TypeIII-Medium beam angle provides uniform coverage on roadways and public spaces, enhancing visibility and safety.
2. 3x8 T3M lens with an IP66 rating, providing excellent protection against dust and water ingress, making it suitable for various challenging environments.



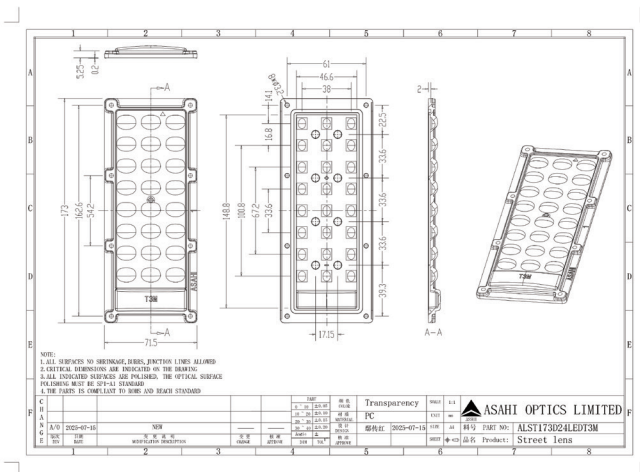
LENS LIGHT DISTRIBUTION & APPLICATION



T3M



LENS DRAWING



LED TYPE



5050LED



5050LED

LED BRAND

