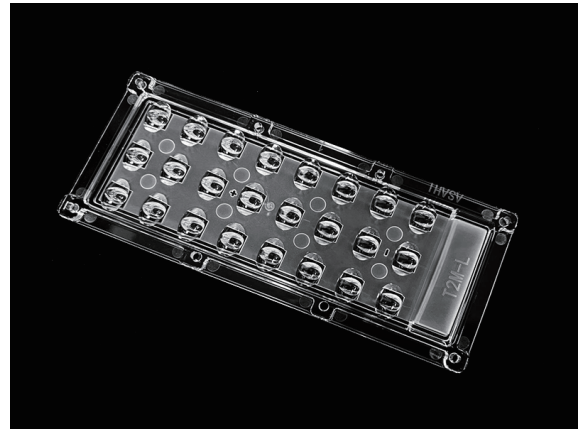


## 173mm 3x8 PC Lens for Long-Distance Lighting

Model:	ALST173D24LEDT2M-L
Dimensions:	173x71.4mm
Height:	9.15mm
Beam Angle:	T2M-Long
Material:	PC-1250Z TEIJIN
Transmittance:	> 88%
LED Type:	5050LED

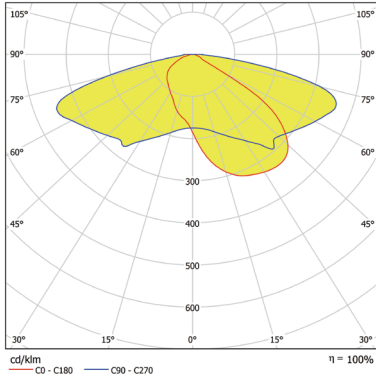


### FEATURES

1. The 3X8 lens is designed for IESNA Type II (medium) beam for long pole distances. Suitable for European P-class and pathway lighting.
2. 3x8 Typell-Medium Long lens provides clear and uniform illumination, improving visibility for pedestrians, cyclists, and motorists, enhancing safety.



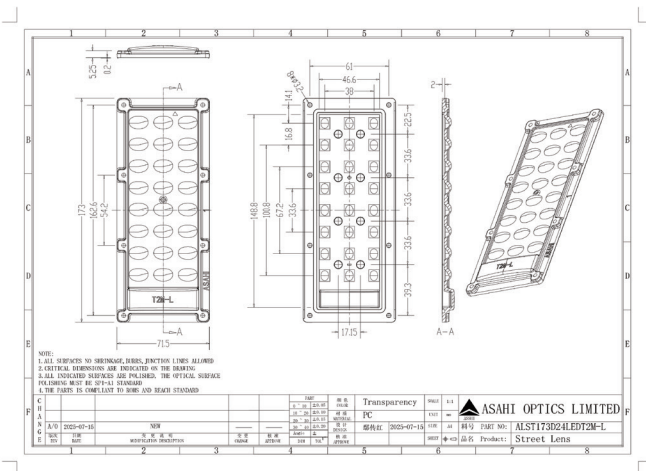
## LENS LIGHT DISTRIBUTION & APPLICATION



**T2M-Long**



## LENS DRAWING



## LED TYPE



5050LED



5050LED

## LED BRAND

