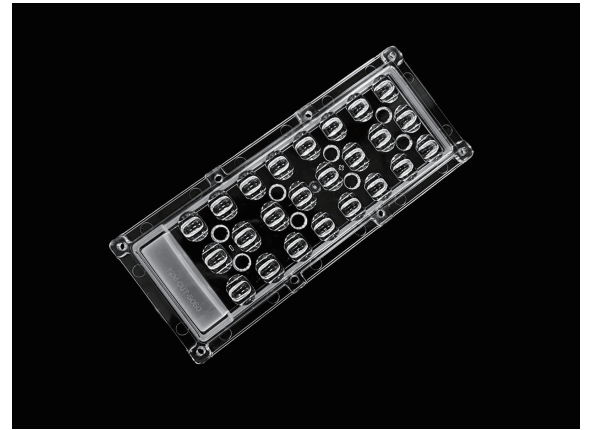


IP66 Street Lighting 3x8 Lens 5050LED T2M-Cutoff

Model:	ALST173D24LED5050T2M-cutoff
Size:	173x71.5(mm)
Height:	9.3mm
Beam Angle:	T2M-cutoff
Material:	PMMA, PC
Transmittance:	>93%
LED Type:	5050LED

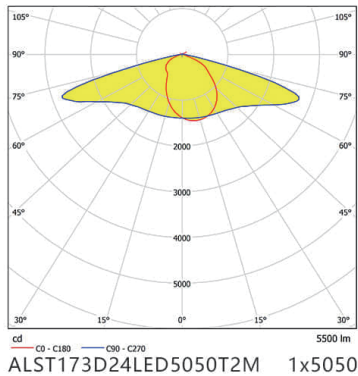


FEATURES

1. 3x8 IP lens, 24 LEDs, same dimensions as the 2x6 lens, 173mm x 71.4mm.
2. Uses Philips 5050 LED chips for light distribution testing, and is compatible with, for example, 2 x 2835/2 x 3030, 3 x 2835/3 x 3030, and 4 x 2835/4 x 3030 LEDs.
3. Features an IP66 high protection rating. The IP66 rating ensures excellent water and dust resistance, making this lens suitable for outdoor street lighting in various weather conditions.



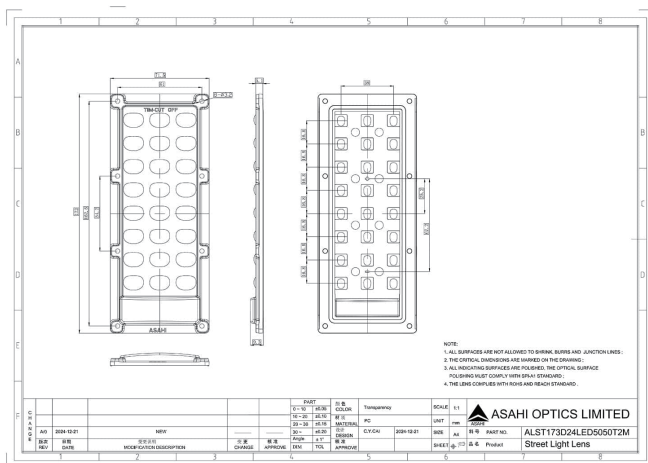
LENS LIGHT DISTRIBUTION & APPLICATION



T2M-cutoff



LENS DRAWING



LED TYPE



5050LED



5050LED

LED BRAND

