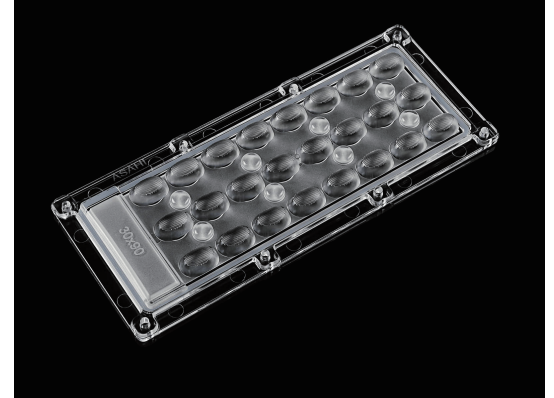


## 173mm 3x8 LED LENS 30x90° with high power 100W for High Bay lighting

Model:	ALHB173D24LED3090G
Size:	173x71.53(mm)
Height:	10.38mm
Beam Angle:	30x90°
Material:	PC
Transmittance:	>90%
LED Type:	2835/ 3030/ 5050LED

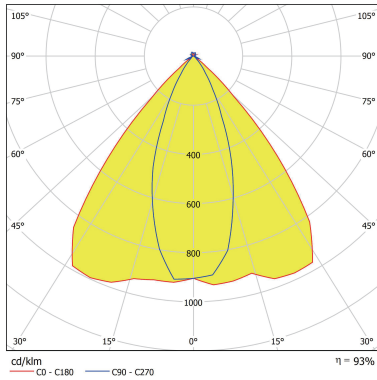


### FEATURES

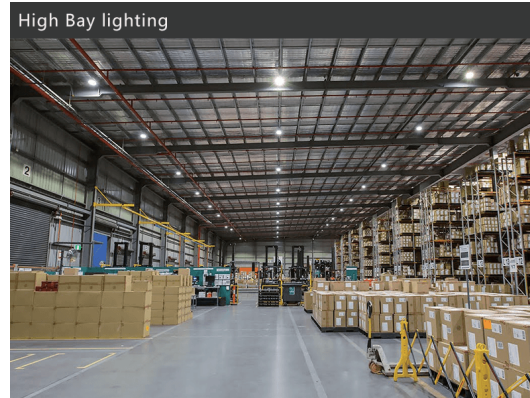
1. It features a compact design with three rows of eight optical surface. The application is on corridors, offices, logistics warehouses, and supermarkets, etc.
2. IP66 rated for dust and water resistance, making it suitable for use in indoor and outdoor environments.
3. With a power output of 100W, this LED light offers high energy efficiency and cost savings compared to traditional lighting sources.



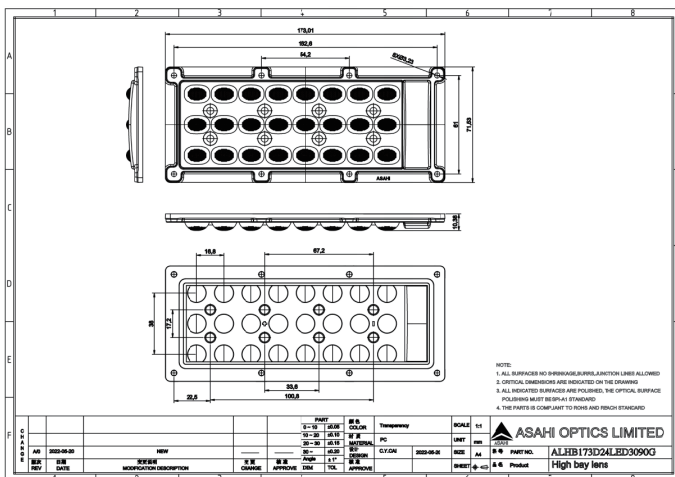
## LENS LIGHT DISTRIBUTION & APPLICATION



30x90°



## LENS DRAWING



## LED TYPE



3030LED



5050LED

## LED BRAND

