

Wide-area Light Optics 3x8 Lens 5050LED 120 Degree

Model:	ALHB173D24LED120G
Size:	173x71.4(mm)
Height:	9.3mm
Beam Angle:	120°
Material:	PMMA
Transmittance:	>90%
LED Type:	2835/ 3030/ 5050LED

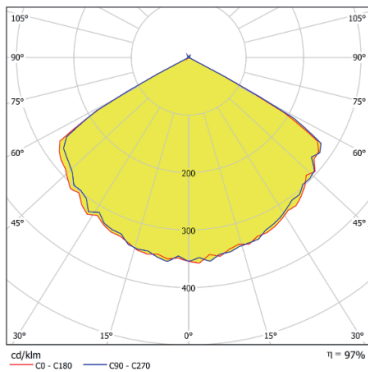


FEATURES

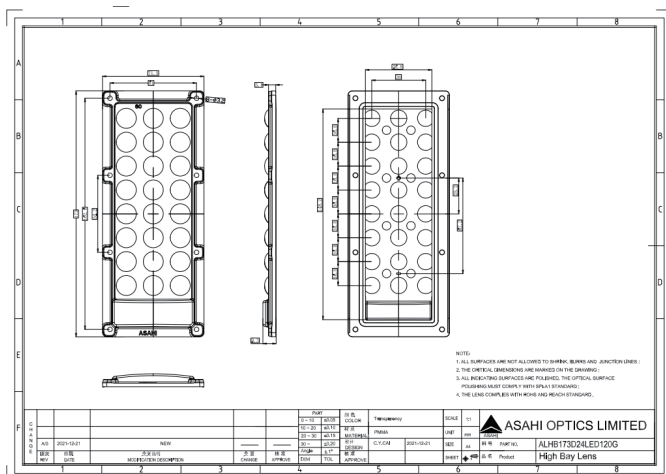
1. 3x8 lens with a wide 120° beam angle, making it versatile for a variety of large-area illumination needs. Such as high bay lighting, flood lighting, and stadium lighting etc.
2. The lens can be manufactured using both PC and PMMA material, caters to different customer preferences regarding lens materials.
3. 3x8 lens can be matched with different LED types, including 2835, 3030, and 5050. This flexibility allows it to meet diverse budget requirements.



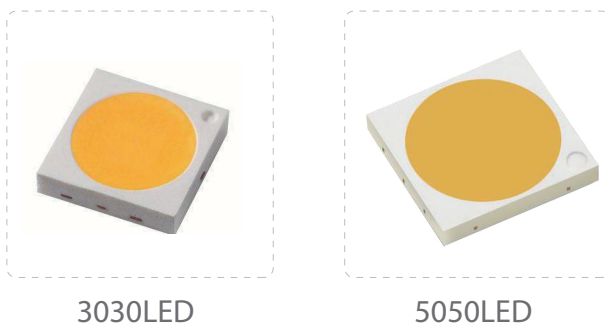
LENS LIGHT DISTRIBUTION & APPLICATION



LENS DRAWING



LED TYPE



LED BRAND

