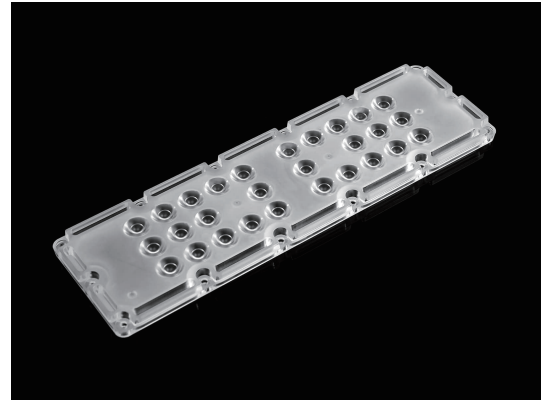


236 Mm 28 LED Flat Flood Light Lens 30 Degree

Model:	ARHB236D28LEDT30G
Size:	236x70(mm)
Height:	9.5mm
Beam Angle:	30°
Material:	PC-1250Z TEIJIN
Transmittance:	>90%
LED Type:	5050LED



FEATURES

1. 28-in-1 module lens, designed with 5050LED, achieving a power output of up to 100W per piece.
2. With a 30degree beam angle, it is well-suited for floodlight applications, providing efficient and targeted illumination.
3. It's made of high quality PC material,ensuring durability and heat resistance up to 120°C.



