

28LEDs lens for Street lighting 80x150°

Model:	AJST236D28LED80150G
Size:	236x70(mm)
Height:	6.6mm
Beam Angle:	80x150°
Material:	PC-1250Z TEIJIN
Transmittance:	>88%
LED Type:	5050LED

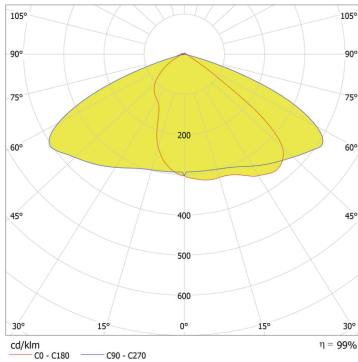


FEATURES

- 1.The 80x150° beam angle means that the lens is designed to produce a rectangular-shaped beam of light, with a wider spread horizontally at 80° and a narrower spread vertically at 150°.
- 2.This beam angle is commonly used in street lighting applications as it provides a good balance between horizontal coverage and vertical light distribution, effectively illuminating the road and surrounding areas.
3. The 28LEDs lens for street lighting with an 80x150° beam angle is designed to provide effective illumination for a wide area while also minimizing light spillage and glare.



LENS LIGHT DISTRIBUTION & APPLICATION

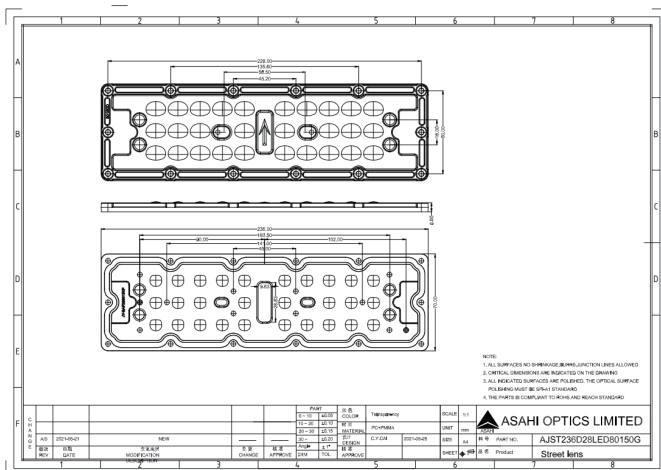


80x150°

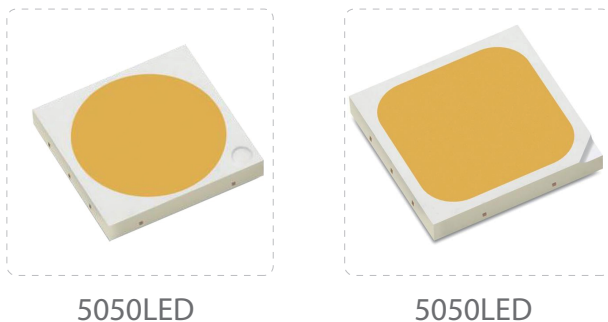
Wide Applications



LENS DRAWING



LED TYPE



LED BRAND

