

20mm single lens with asymmetric beams for architecture lighting

Model:	AST20DP30G
Size:	20x14.5(mm)
Height:	7.67mm
Beam Angle:	Asy 30°
Material:	PMMA
Transmittance:	>93%
LED Type:	CREE XP-G , XP-E

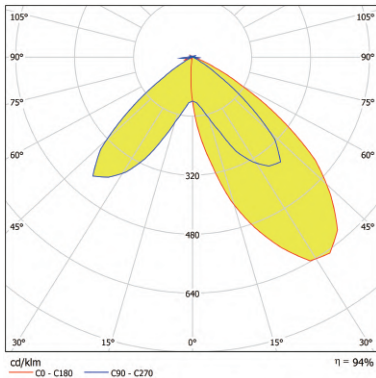


FEATURES

1. This 20mm single lens was designed by PMMA material with high lighting transmittance upto 93%.
2. This 20mm single lens designed with asymmetric beams can meet particular architecture lighting applications.



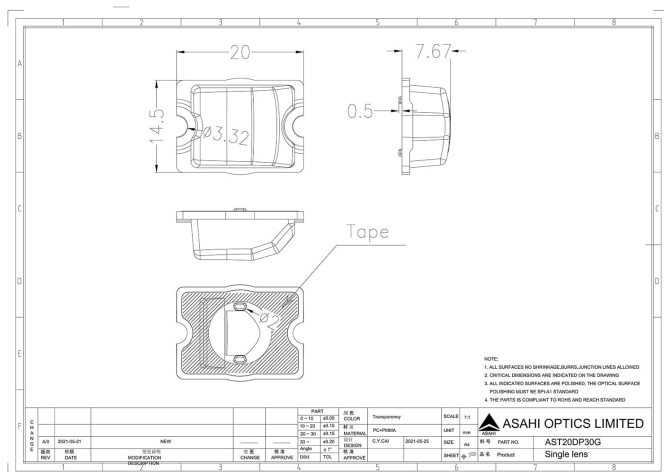
LENS LIGHT DISTRIBUTION & APPLICATION



Asy 30°



LENS DRAWING



LED TYPE



LED Cree XP-G4



LED Cree XP-G4

LED BRAND

