

## 35mm Single LED Lens Series for Downlight & Spotlight Optics

Model:	ASHR35D19H24G/36G/60G
Size:	Ø35mm
Model:	17.9mm
Beam Angle:	24°, 36°, 60°
Material:	PMMA (Lens) + PC (Holder)
Transmittance:	>93%
LED Type:	5050LED



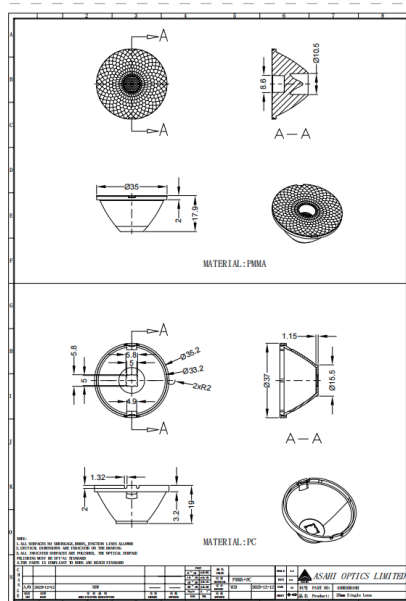
### FEATURES

- 1. Precision Optical Design:** Optimized specifically for mainstream 5050 LED chips to ensure efficient light output and a sharp beam cut-off, effectively reducing glare and enhancing lighting quality.
- 2. Flexible Angle Selection:** Offers three beam angle options—24° (accent lighting), 36° (general lighting), and 60° (ambient lighting)—providing a one-stop optical solution for downlights, spotlights, track lights, and architectural lighting.
- 3. Plug-and-Play Reliability:** As a mature standard optical lens, it simplifies luminaire development, significantly shortens project timelines, and serves as a dependable choice for rapid product launch.



## LENS LIGHT DISTRIBUTION & APPLICATION

### LENS DRAWING



### LED TYPE



5050LED



5050LED

### LED BRAND

