

26mm Architectural Linear Lighting Lens 3535LED

Model:	ALS26D3535LED10X100G
Size:	26.1x22.4(mm)
Height:	12.8mm
Beam Angle:	10x100°
Material:	PMMA
Transmittance:	>93%
LED Type:	3030/ 5050LED

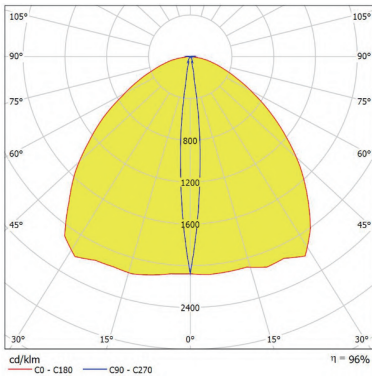


FEATURES

- 1, Single linear lens for window linear lighting
- 2, Single linear lens with oval narrow beam 10x100°
- 3, Application for window linear lighting, wall washer lighting, traffic signal lighting



LENS LIGHT DISTRIBUTION & APPLICATION

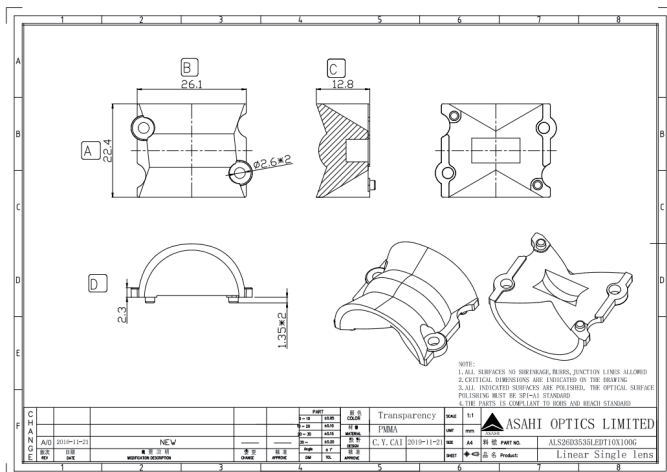


10x100°

Wall Washer Light, Landscaping Light, Architecture lighting



LENS DRAWING



LED TYPE



3030LED



5050LED

LED BRAND

