

single lens with 3M tape 30°

Model:	ALS21D30G
Size:	Ø21.58mm
Height:	11.4mm
Beam Angle:	30°
Material:	PMMA
Transmittance:	>93%
LED Type:	3535LED

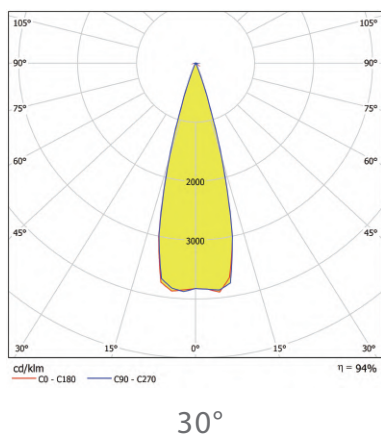


FEATURES

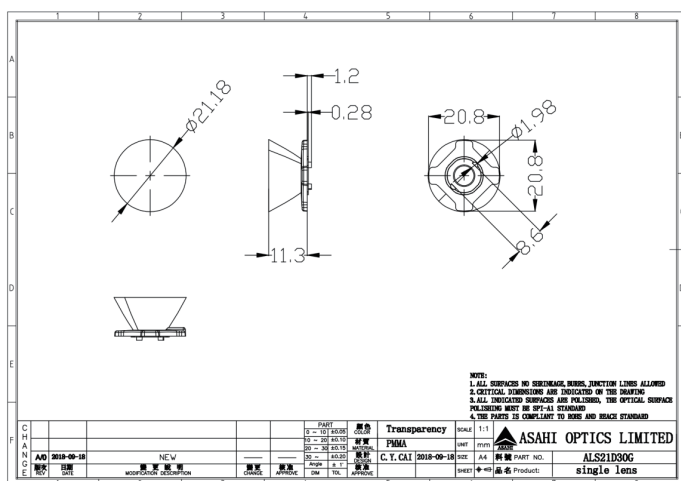
1. Asahi ALS21D30G single lens, optimized for 3535LED, uses high-quality PMMA optical material to ensure excellent transmittance of over 93% and outstanding durability.
2. This lens has a precise 30 ° beam angle, combined with convenient 3M tape installation, making it an ideal choice for achieving efficient and uniform wall cleaning lighting effects.
3. Its excellent optical properties and stability of PMMA material enable it to provide long-lasting and high-quality light distribution in various indoor and outdoor wall wash lamp applications.



LENS LIGHT DISTRIBUTION & APPLICATION



LENS DRAWING



LED TYPE



3535LED



3535LED

LED BRAND

