

## single lens with 3M tape 15x55°

Model:	ALS21D1555G
Size:	Ø21.58mm
Height:	11.4mm
Beam Angle:	15x55°
Material:	PMMA
Transmittance:	>93%
LED Type:	3535LED

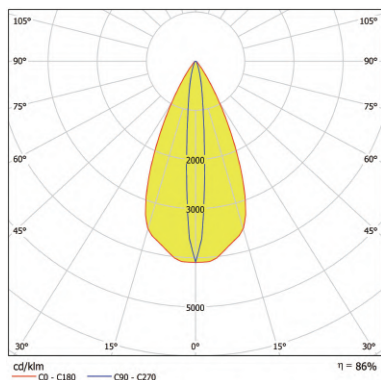


## FEATURES

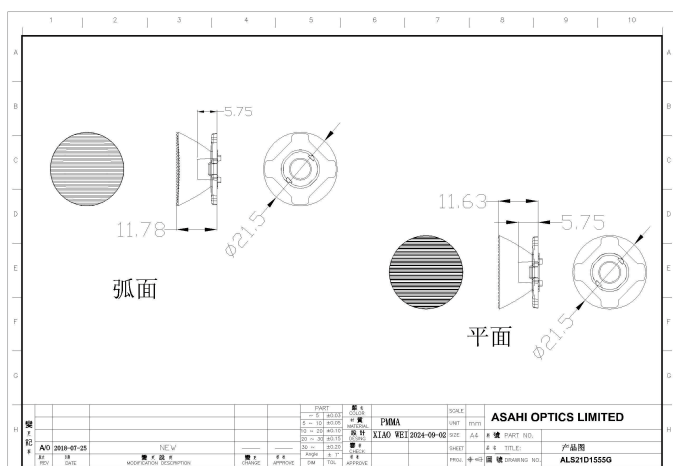
1. Asahi ALS21D1555G single lens, made of PMMA material, with a transmittance of over 93%, can be used for 3535LED type.
2. Its unique 15x55 ° beam angle, diameter of 21.58mm, height of 11.4mm, can accurately achieve the effect of wall washing lamps.
3. This high-efficiency lens is an ideal choice for creating excellent wall wash lighting applications.



## LENS LIGHT DISTRIBUTION & APPLICATION



## LENS DRAWING



## LED TYPE



3535LED



3535LED

## LED BRAND

