

21mm Single Lens Narrow Spot Beam 10 Degree

Model:	ALS21D10G
Size:	Ø21.58mm
Height:	11.4mm
Beam Angle:	10°
Material:	PMMA
Transmittance:	>93%
LED Type:	3535LED

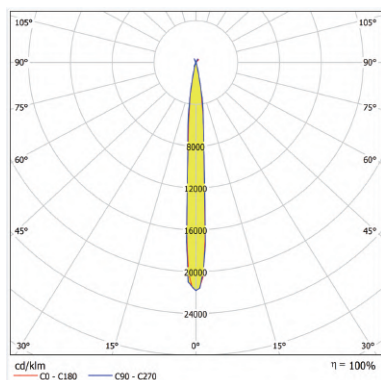


FEATURES

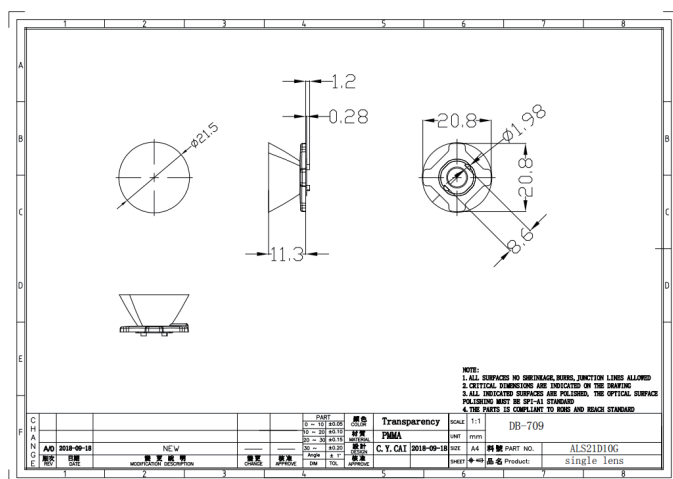
- 1, 21mm single lens Assembly with installation 3M tape
- 2, Single linear lens design with 3535LED
- 3, Application for window linear lighting, wall washer lighting, traffic signal lighting



LENS LIGHT DISTRIBUTION & APPLICATION



LENS DRAWING



LED TYPE



3535LED



3535LED

LED BRAND

