

300° Wide Angle Lens for 2835/3030 LED - Perfect for COB Lens

Model:	ALCLL031
Size:	Ø30.27mm
Height:	22.56mm
Beam Angle:	300°
Material:	PMMA
Transmittance:	>90%
LED Type:	2835/ 3030LED



FEATURES

- 1.30x22mm diameter compatible with 3030/2835 LED package.
2. Perfect suitable for candle lighting, indoor lighting, hotel lighting.

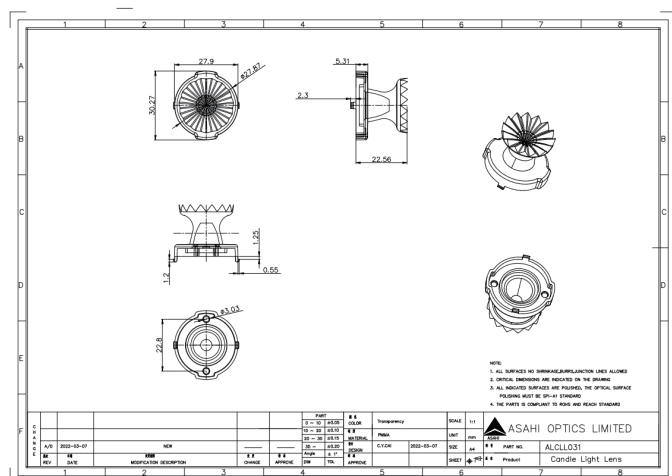


LENS LIGHT DISTRIBUTION & APPLICATION

Candle lighting, Indoor lighting, Hotel lighting



LENS DRAWING



LED TYPE



2835LED



3030LED

LED BRAND

